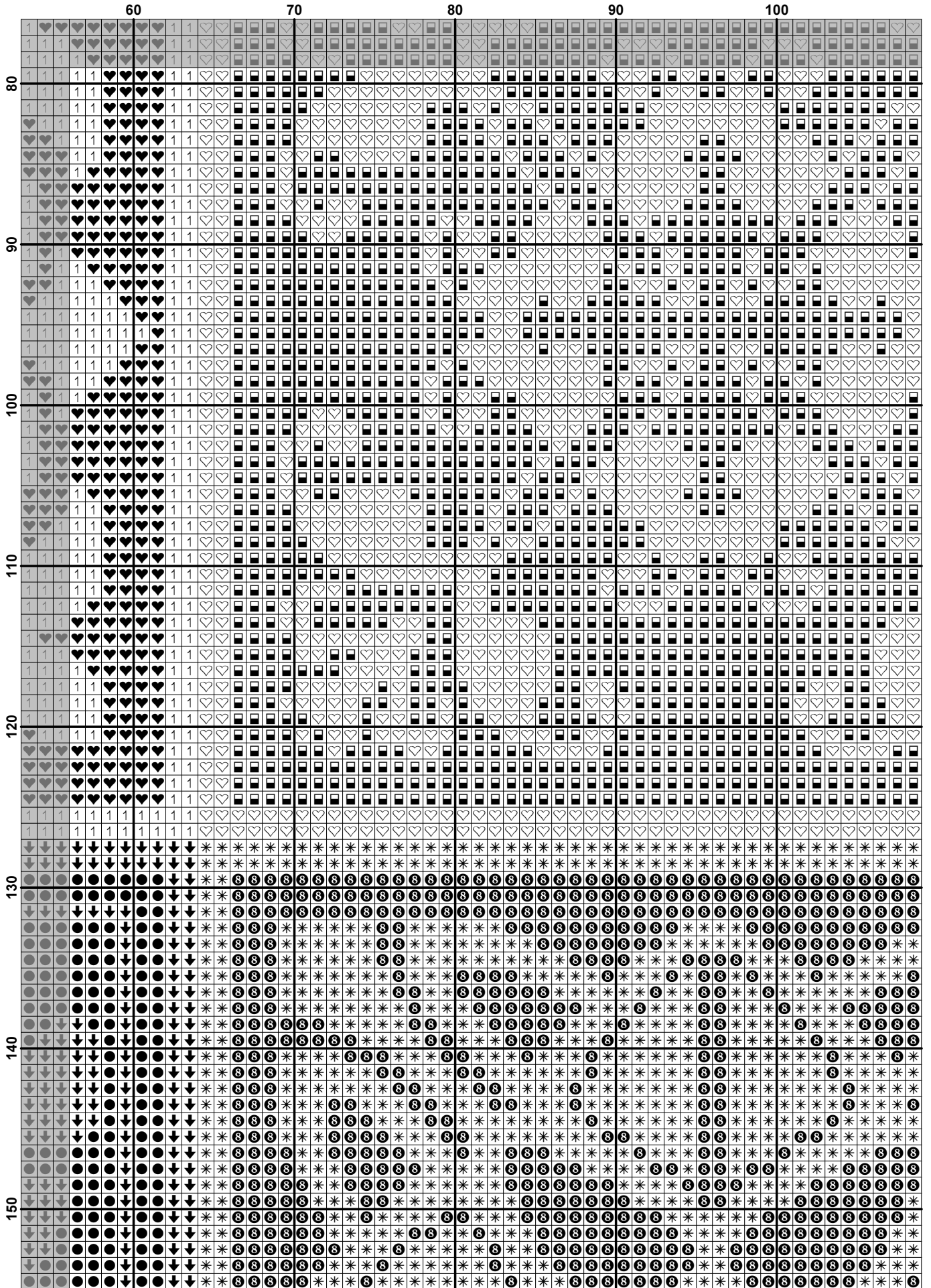


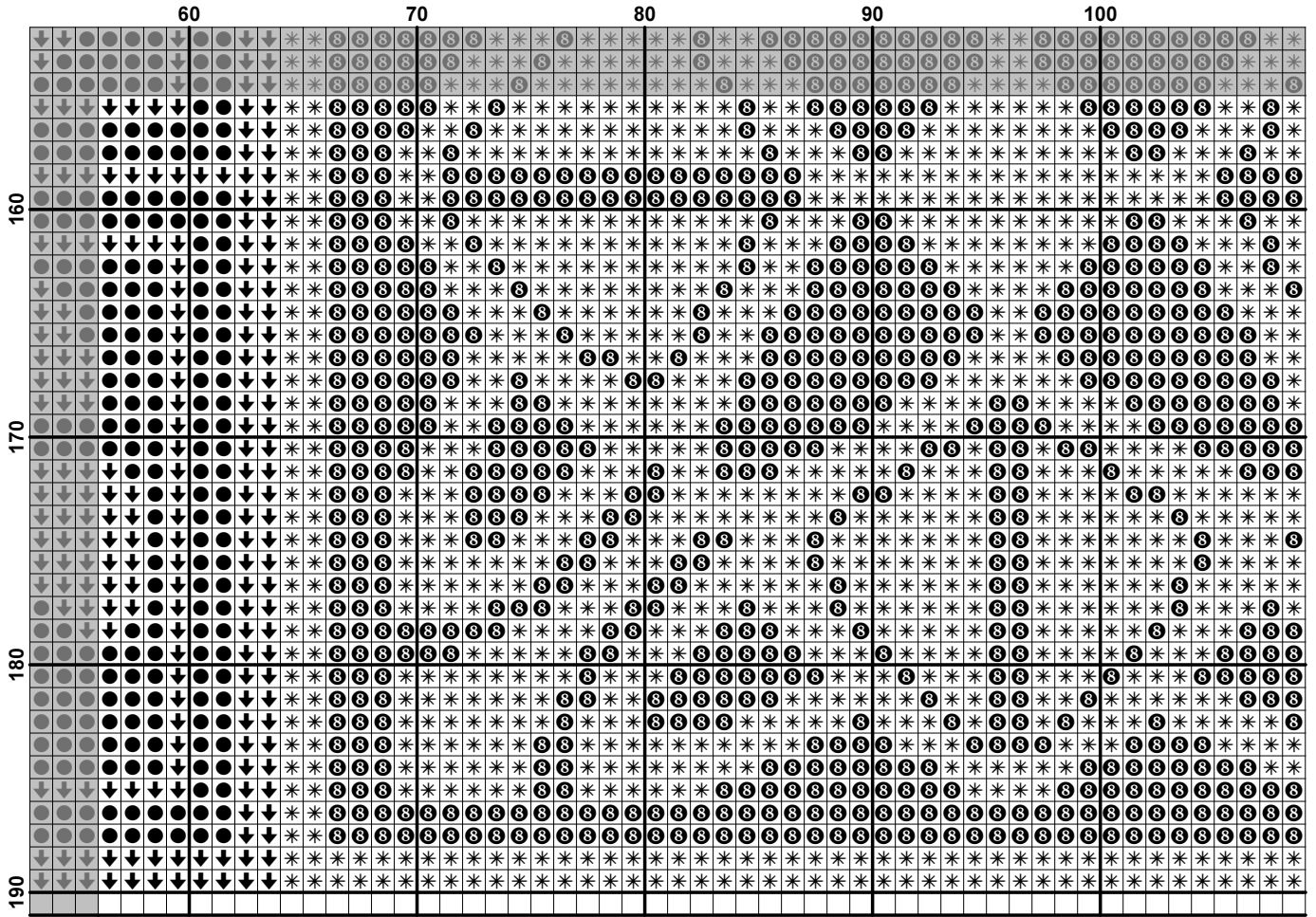
	160	170	180	190
10	↓	↓	↓	↓
	↓	↓	↓	↓
	↓	↓	↓	↓
	↓	↓	↓	↓
	↓	↓	↓	↓
	↓	↓	↓	↓
	↓	↓	↓	↓
	↓	↓	↓	↓
	↓	↓	↓	↓
	↓	↓	↓	↓
20	↓	↓	↓	↓
	↓	↓	↓	↓
	↓	↓	↓	↓
	↓	↓	↓	↓
	↓	↓	↓	↓
	↓	↓	↓	↓
	↓	↓	↓	↓
	↓	↓	↓	↓
	↓	↓	↓	↓
	↓	↓	↓	↓
30	↓	↓	↓	↓
	↓	↓	↓	↓
	↓	↓	↓	↓
	↓	↓	↓	↓
	↓	↓	↓	↓
	↓	↓	↓	↓
	↓	↓	↓	↓
	↓	↓	↓	↓
	↓	↓	↓	↓
	↓	↓	↓	↓
40	↓	↓	↓	↓
	↓	↓	↓	↓
	↓	↓	↓	↓
	↓	↓	↓	↓
	↓	↓	↓	↓
	↓	↓	↓	↓
	↓	↓	↓	↓
	↓	↓	↓	↓
	↓	↓	↓	↓
	↓	↓	↓	↓
50	↓	↓	↓	↓
	↓	↓	↓	↓
	↓	↓	↓	↓
	↓	↓	↓	↓
	↓	↓	↓	↓
	↓	↓	↓	↓
	↓	↓	↓	↓
	↓	↓	↓	↓
	↓	↓	↓	↓
	↓	↓	↓	↓
60	↓	↓	↓	↓
	↓	↓	↓	↓
	↓	↓	↓	↓
	↓	↓	↓	↓
	↓	↓	↓	↓
	↓	↓	↓	↓
	↓	↓	↓	↓
	↓	↓	↓	↓
	↓	↓	↓	↓
	↓	↓	↓	↓
70	⊕	⊕	⊕	⊕
	⊕	⊕	⊕	⊕
	⊕	⊕	⊕	⊕
	⊕	⊕	⊕	⊕
	⊕	⊕	⊕	⊕
	⊕	⊕	⊕	⊕
	⊕	⊕	⊕	⊕
	⊕	⊕	⊕	⊕
	⊕	⊕	⊕	⊕
	⊕	⊕	⊕	⊕

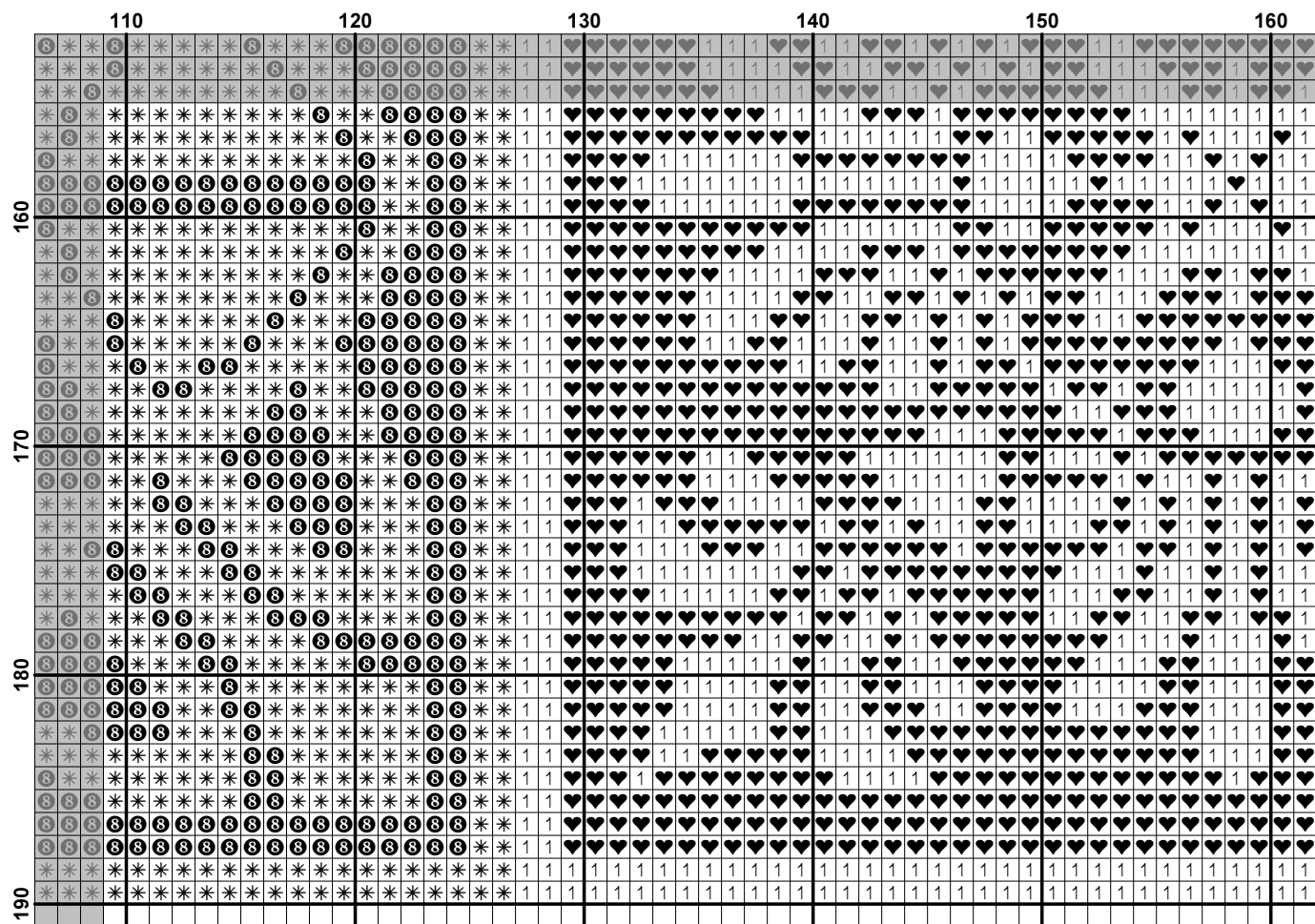
	10	20	30	40	50
80	1 1	1 1	1 1	1 1	1 1
81	1 1	1 1	1 1	1 1	1 1
82	1 1	1 1	1 1	1 1	1 1
83	1 1	1 1	1 1	1 1	1 1
84	1 1	1 1	1 1	1 1	1 1
85	1 1	1 1	1 1	1 1	1 1
86	1 1	1 1	1 1	1 1	1 1
87	1 1	1 1	1 1	1 1	1 1
88	1 1	1 1	1 1	1 1	1 1
89	1 1	1 1	1 1	1 1	1 1
90	1 1	1 1	1 1	1 1	1 1
91	1 1	1 1	1 1	1 1	1 1
92	1 1	1 1	1 1	1 1	1 1
93	1 1	1 1	1 1	1 1	1 1
94	1 1	1 1	1 1	1 1	1 1
95	1 1	1 1	1 1	1 1	1 1
96	1 1	1 1	1 1	1 1	1 1
97	1 1	1 1	1 1	1 1	1 1
98	1 1	1 1	1 1	1 1	1 1
99	1 1	1 1	1 1	1 1	1 1
100	1 1	1 1	1 1	1 1	1 1
101	1 1	1 1	1 1	1 1	1 1
102	1 1	1 1	1 1	1 1	1 1
103	1 1	1 1	1 1	1 1	1 1
104	1 1	1 1	1 1	1 1	1 1
105	1 1	1 1	1 1	1 1	1 1
106	1 1	1 1	1 1	1 1	1 1
107	1 1	1 1	1 1	1 1	1 1
108	1 1	1 1	1 1	1 1	1 1
109	1 1	1 1	1 1	1 1	1 1
110	1 1	1 1	1 1	1 1	1 1
111	1 1	1 1	1 1	1 1	1 1
112	1 1	1 1	1 1	1 1	1 1
113	1 1	1 1	1 1	1 1	1 1
114	1 1	1 1	1 1	1 1	1 1
115	1 1	1 1	1 1	1 1	1 1
116	1 1	1 1	1 1	1 1	1 1
117	1 1	1 1	1 1	1 1	1 1
118	1 1	1 1	1 1	1 1	1 1
119	1 1	1 1	1 1	1 1	1 1
120	1 1	1 1	1 1	1 1	1 1
121	1 1	1 1	1 1	1 1	1 1
122	1 1	1 1	1 1	1 1	1 1
123	1 1	1 1	1 1	1 1	1 1
124	1 1	1 1	1 1	1 1	1 1
125	1 1	1 1	1 1	1 1	1 1
126	1 1	1 1	1 1	1 1	1 1
127	1 1	1 1	1 1	1 1	1 1
128	1 1	1 1	1 1	1 1	1 1
129	1 1	1 1	1 1	1 1	1 1
130	1 1	1 1	1 1	1 1	1 1
131	1 1	1 1	1 1	1 1	1 1
132	1 1	1 1	1 1	1 1	1 1
133	1 1	1 1	1 1	1 1	1 1
134	1 1	1 1	1 1	1 1	1 1
135	1 1	1 1	1 1	1 1	1 1
136	1 1	1 1	1 1	1 1	1 1
137	1 1	1 1	1 1	1 1	1 1
138	1 1	1 1	1 1	1 1	1 1
139	1 1	1 1	1 1	1 1	1 1
140	1 1	1 1	1 1	1 1	1 1
141	1 1	1 1	1 1	1 1	1 1
142	1 1	1 1	1 1	1 1	1 1
143	1 1	1 1	1 1	1 1	1 1
144	1 1	1 1	1 1	1 1	1 1
145	1 1	1 1	1 1	1 1	1 1
146	1 1	1 1	1 1	1 1	1 1
147	1 1	1 1	1 1	1 1	1 1
148	1 1	1 1	1 1	1 1	1 1
149	1 1	1 1	1 1	1 1	1 1
150	1 1	1 1	1 1	1 1	1 1
151	1 1	1 1	1 1	1 1	1 1
152	1 1	1 1	1 1	1 1	1 1
153	1 1	1 1	1 1	1 1	1 1
154	1 1	1 1	1 1	1 1	1 1
155	1 1	1 1	1 1	1 1	1 1
156	1 1	1 1	1 1	1 1	1 1
157	1 1	1 1	1 1	1 1	1 1
158	1 1	1 1	1 1	1 1	1 1
159	1 1	1 1	1 1	1 1	1 1
160	1 1	1 1	1 1	1 1	1 1



	110	120	130	140	150	160
80	☐	☐	☐	☐	☐	☐
81	☐	☐	☐	☐	☐	☐
82	☐	☐	☐	☐	☐	☐
83	☐	☐	☐	☐	☐	☐
84	☐	☐	☐	☐	☐	☐
85	☐	☐	☐	☐	☐	☐
86	☐	☐	☐	☐	☐	☐
87	☐	☐	☐	☐	☐	☐
88	☐	☐	☐	☐	☐	☐
89	☐	☐	☐	☐	☐	☐
90	☐	☐	☐	☐	☐	☐
91	☐	☐	☐	☐	☐	☐
92	☐	☐	☐	☐	☐	☐
93	☐	☐	☐	☐	☐	☐
94	☐	☐	☐	☐	☐	☐
95	☐	☐	☐	☐	☐	☐
96	☐	☐	☐	☐	☐	☐
97	☐	☐	☐	☐	☐	☐
98	☐	☐	☐	☐	☐	☐
99	☐	☐	☐	☐	☐	☐
100	☐	☐	☐	☐	☐	☐
101	☐	☐	☐	☐	☐	☐
102	☐	☐	☐	☐	☐	☐
103	☐	☐	☐	☐	☐	☐
104	☐	☐	☐	☐	☐	☐
105	☐	☐	☐	☐	☐	☐
106	☐	☐	☐	☐	☐	☐
107	☐	☐	☐	☐	☐	☐
108	☐	☐	☐	☐	☐	☐
109	☐	☐	☐	☐	☐	☐
110	☐	☐	☐	☐	☐	☐
111	☐	☐	☐	☐	☐	☐
112	☐	☐	☐	☐	☐	☐
113	☐	☐	☐	☐	☐	☐
114	☐	☐	☐	☐	☐	☐
115	☐	☐	☐	☐	☐	☐
116	☐	☐	☐	☐	☐	☐
117	☐	☐	☐	☐	☐	☐
118	☐	☐	☐	☐	☐	☐
119	☐	☐	☐	☐	☐	☐
120	☐	☐	☐	☐	☐	☐
121	☐	☐	☐	☐	☐	☐
122	☐	☐	☐	☐	☐	☐
123	☐	☐	☐	☐	☐	☐
124	☐	☐	☐	☐	☐	☐
125	☐	☐	☐	☐	☐	☐
126	☐	☐	☐	☐	☐	☐
127	☐	☐	☐	☐	☐	☐
128	☐	☐	☐	☐	☐	☐
129	☐	☐	☐	☐	☐	☐
130	*	*	*	*	*	*
131	*	*	*	*	*	*
132	*	*	*	*	*	*
133	⊗	⊗	⊗	⊗	⊗	⊗
134	⊗	⊗	⊗	⊗	⊗	⊗
135	⊗	⊗	⊗	⊗	⊗	⊗
136	⊗	⊗	⊗	⊗	⊗	⊗
137	⊗	⊗	⊗	⊗	⊗	⊗
138	⊗	⊗	⊗	⊗	⊗	⊗
139	⊗	⊗	⊗	⊗	⊗	⊗
140	⊗	⊗	⊗	⊗	⊗	⊗
141	⊗	⊗	⊗	⊗	⊗	⊗
142	⊗	⊗	⊗	⊗	⊗	⊗
143	⊗	⊗	⊗	⊗	⊗	⊗
144	⊗	⊗	⊗	⊗	⊗	⊗
145	⊗	⊗	⊗	⊗	⊗	⊗
146	⊗	⊗	⊗	⊗	⊗	⊗
147	⊗	⊗	⊗	⊗	⊗	⊗
148	⊗	⊗	⊗	⊗	⊗	⊗
149	⊗	⊗	⊗	⊗	⊗	⊗
150	⊗	⊗	⊗	⊗	⊗	⊗
151	⊗	⊗	⊗	⊗	⊗	⊗
152	⊗	⊗	⊗	⊗	⊗	⊗
153	⊗	⊗	⊗	⊗	⊗	⊗
154	⊗	⊗	⊗	⊗	⊗	⊗
155	⊗	⊗	⊗	⊗	⊗	⊗
156	⊗	⊗	⊗	⊗	⊗	⊗
157	⊗	⊗	⊗	⊗	⊗	⊗
158	⊗	⊗	⊗	⊗	⊗	⊗
159	⊗	⊗	⊗	⊗	⊗	⊗
160	⊗	⊗	⊗	⊗	⊗	⊗




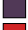


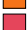






	160	170	180	190
80	☉	☉	☉	☉
81	☉	☉	☉	☉
82	☉	☉	☉	☉
83	☉	☉	☉	☉
84	☉	☉	☉	☉
85	☉	☉	☉	☉
86	☉	☉	☉	☉
87	☉	☉	☉	☉
88	☉	☉	☉	☉
89	☉	☉	☉	☉
90	☉	☉	☉	☉
91	☉	☉	☉	☉
92	☉	☉	☉	☉
93	☉	☉	☉	☉
94	☉	☉	☉	☉
95	☉	☉	☉	☉
96	☉	☉	☉	☉
97	☉	☉	☉	☉
98	☉	☉	☉	☉
99	☉	☉	☉	☉
100	☉	☉	☉	☉
101	☉	☉	☉	☉
102	☉	☉	☉	☉
103	☉	☉	☉	☉
104	☉	☉	☉	☉
105	☉	☉	☉	☉
106	☉	☉	☉	☉
107	☉	☉	☉	☉
108	☉	☉	☉	☉
109	☉	☉	☉	☉
110	☉	☉	☉	☉
111	☉	☉	☉	☉
112	☉	☉	☉	☉
113	☉	☉	☉	☉
114	☉	☉	☉	☉
115	☉	☉	☉	☉
116	☉	☉	☉	☉
117	☉	☉	☉	☉
118	☉	☉	☉	☉
119	☉	☉	☉	☉
120	☉	☉	☉	☉
121	☉	☉	☉	☉
122	☉	☉	☉	☉
123	☉	☉	☉	☉
124	☉	☉	☉	☉
125	☉	☉	☉	☉
126	☉	☉	☉	☉
127	☉	☉	☉	☉
128	☉	☉	☉	☉
129	☉	☉	☉	☉
130	☉	☉	☉	☉
131	☉	☉	☉	☉
132	☉	☉	☉	☉
133	☉	☉	☉	☉
134	☉	☉	☉	☉
135	☉	☉	☉	☉
136	☉	☉	☉	☉
137	☉	☉	☉	☉
138	☉	☉	☉	☉
139	☉	☉	☉	☉
140	☉	☉	☉	☉
141	☉	☉	☉	☉
142	☉	☉	☉	☉
143	☉	☉	☉	☉
144	☉	☉	☉	☉
145	☉	☉	☉	☉
146	☉	☉	☉	☉
147	☉	☉	☉	☉
148	☉	☉	☉	☉
149	☉	☉	☉	☉
150	☉	☉	☉	☉
151	☉	☉	☉	☉
152	☉	☉	☉	☉
153	☉	☉	☉	☉
154	☉	☉	☉	☉
155	☉	☉	☉	☉
156	☉	☉	☉	☉
157	☉	☉	☉	☉
158	☉	☉	☉	☉
159	☉	☉	☉	☉
160	☉	☉	☉	☉





Fabric: Aida 14, White
 189w X 189h Stitches
Size: 14 Count, 34.29w X 34.29h cm














Floss Used for Full Stitches:

Symbol	Strands	Type	Number	Color
	2	DMC	307	Lemon
	2	DMC	437	Tan-LT
	2	DMC	472	Avocado Green-UL LT
	2	DMC	550	Violet-VY DK
	2	DMC	666	Christmas Red-BRT
	2	DMC	726	Topaz-LT
	2	DMC	740	Tangerine
	2	DMC	891	Carnation-DK
	2	DMC	905	Parrot Green-DK
	2	DMC	907	Parrot Green-LT
	2	DMC	975	Golden Brown-DK
	2	DMC	995	Electric Blue-DK
	2	DMC	3846	Bright Turquoise-LT

Usage Summary

Strands Per Skein: 6

Skein Length: 795.0 cm

Type	Number	Full	Half	Quarter	Petite	Back(cm)	Str(cm)	Spec(cm)	French	Bead	Skein Est.
 DMC	307	1644	0	0	0	0.0	0.0	0.0	0	0	1.000
 DMC	437	2252	0	0	0	0.0	0.0	0.0	0	0	1.000
 DMC	472	1618	0	0	0	0.0	0.0	0.0	0	0	1.000
 DMC	550	1993	0	0	0	0.0	0.0	0.0	0	0	1.000
 DMC	666	4414	0	0	0	0.0	0.0	0.0	0	0	2.000
 DMC	726	3524	0	0	0	0.0	0.0	0.0	0	0	2.000
 DMC	740	2325	0	0	0	0.0	0.0	0.0	0	0	1.000
 DMC	891	1976	0	0	0	0.0	0.0	0.0	0	0	1.000
 DMC	905	4192	0	0	0	0.0	0.0	0.0	0	0	2.000
 DMC	907	2128	0	0	0	0.0	0.0	0.0	0	0	1.000
 DMC	975	1717	0	0	0	0.0	0.0	0.0	0	0	1.000
 DMC	995	4228	0	0	0	0.0	0.0	0.0	0	0	2.000
 DMC	3846	3710	0	0	0	0.0	0.0	0.0	0	0	2.000