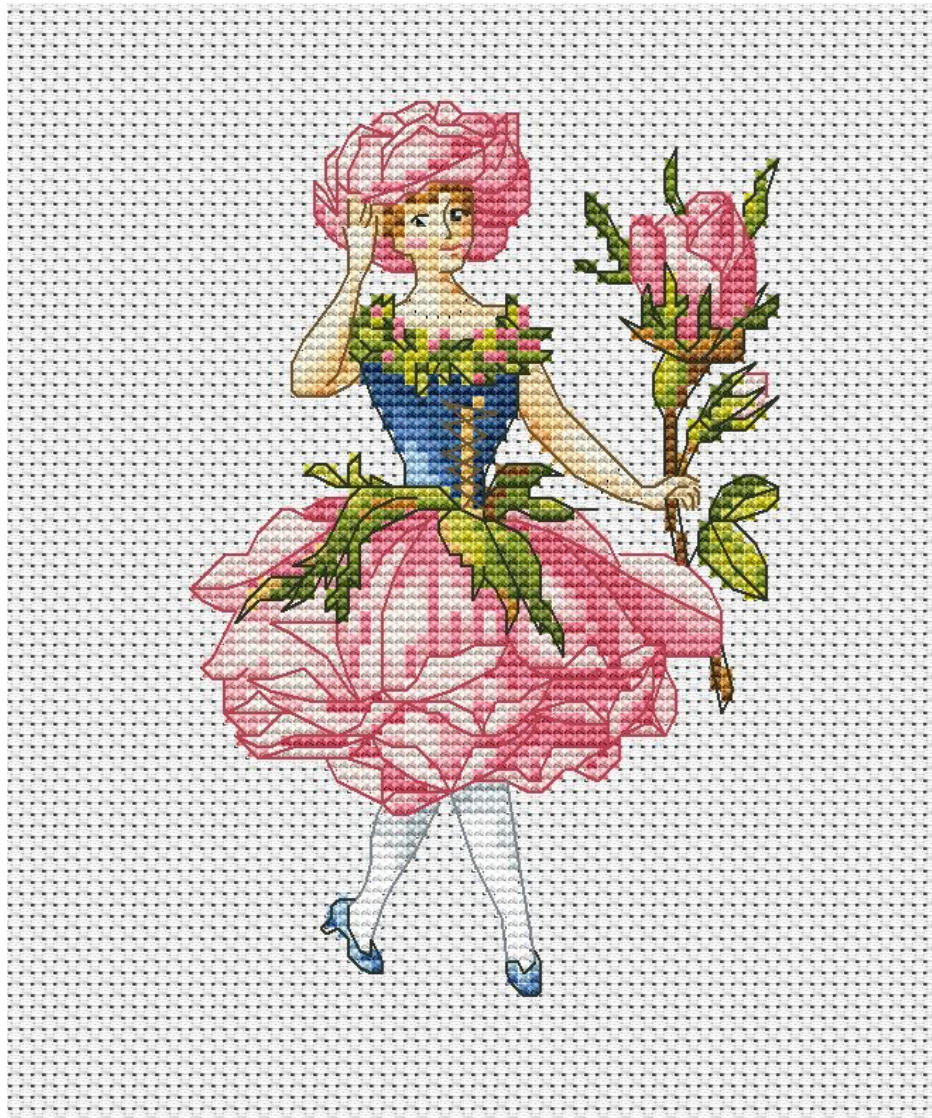


♥ More **Stylish** Designs

♥ More **FREE** Patterns

♥ Much **LOWER** Prices

on **smarcrosstitch.com**  
Use promocode **FRIEND7** for -7%



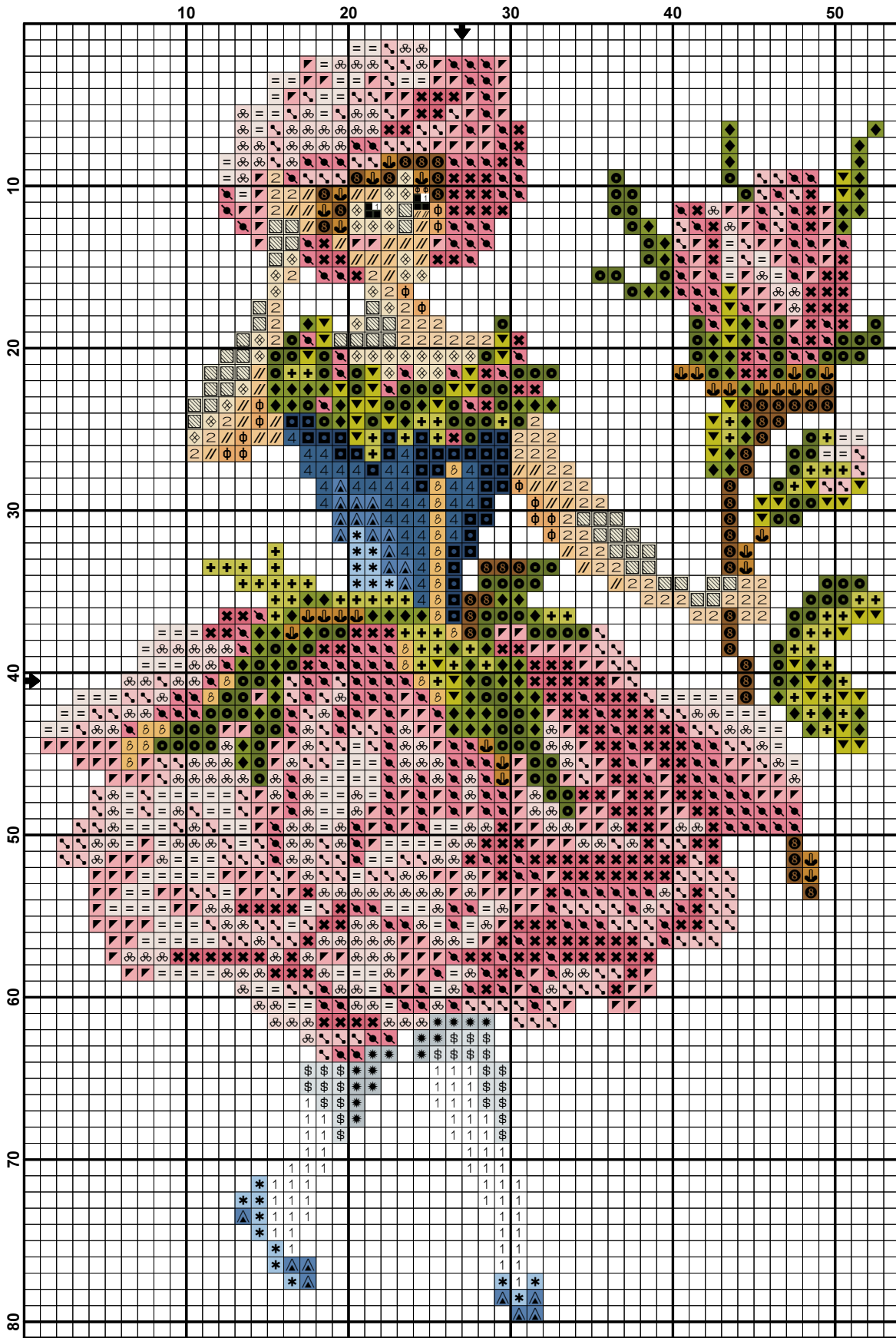
### **Miss Rose**

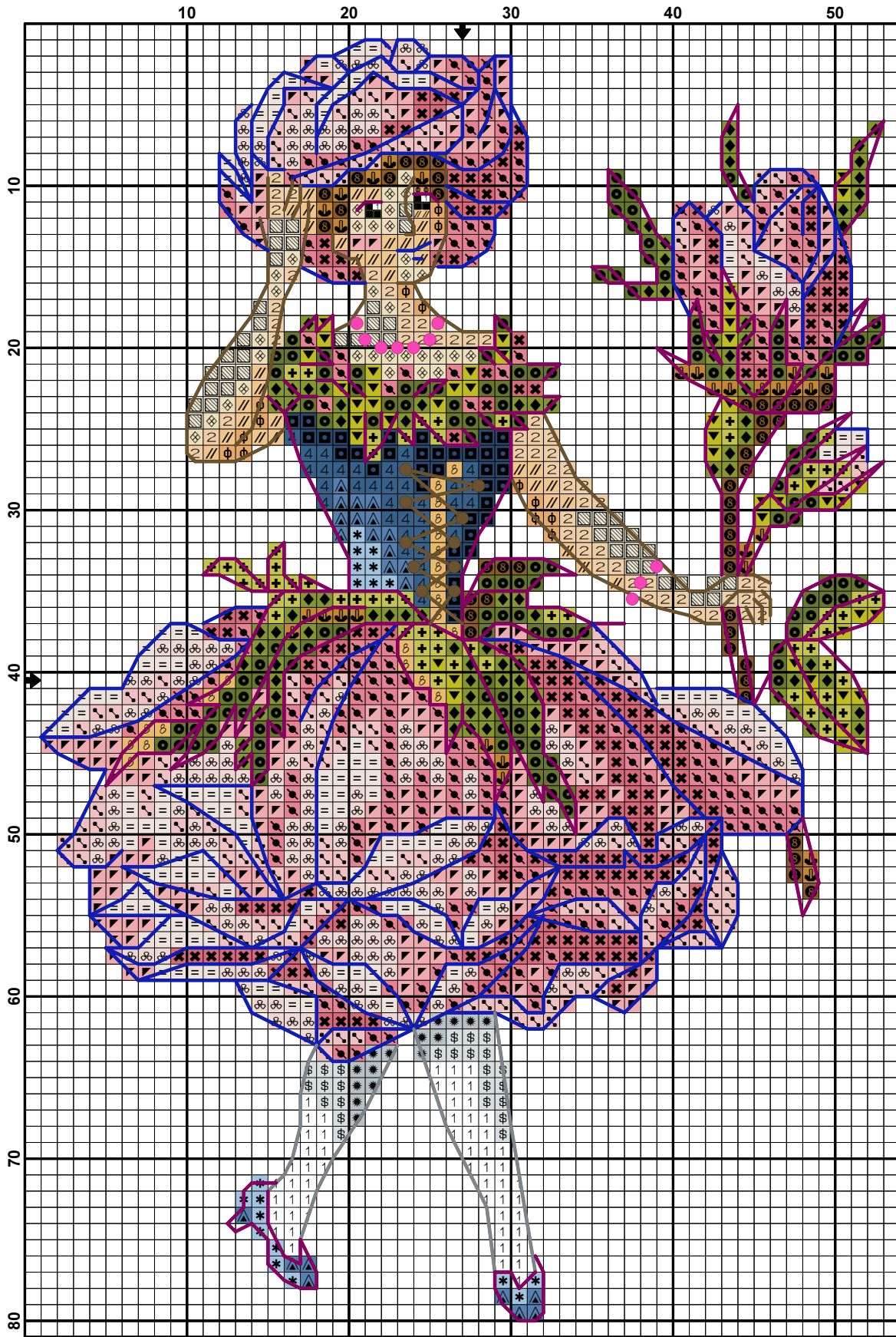
**FREE PATTERN** by Alisa Okneas

**Recommended Fabric:** Aida 14, White

**Size(s):** 52w X 79h Stitches

14 Count, 9.43w X 14.33h cm







**Fabric:** Aida 14, White  
52w X 79h Stitches  
**Size:** 14 Count, 9.43w X 14.33h cm

**Floss Used for Full Stitches:**

Symbol	Strands	Type	Number	Color
	2	DMC	166	Moss Green-MD LT
	2	DMC	312	Baby Blue-VY DK
	2	DMC	322	Baby Blue-DK
	2	DMC	335	Rose
	2	DMC	402	Mahogany-VY LT
	2	DMC	415	Pearl Gray
	2	DMC	580	Moss Green-DK
	2	DMC	581	Moss Green
	2	DMC	762	Pearl Gray-VY LT
	2	DMC	803	Baby Blue-UL VY DK
	2	DMC	818	Baby Pink
	2	DMC	819	Baby Pink-LT
	2	DMC	899	Rose-MD
	2	DMC	945	Tawny
	2	DMC	951	Tawny-LT
	2	DMC	975	Golden Brown-DK
	2	DMC	976	Golden Brown-MD
	2	DMC	3325	Baby Blue-LT
	2	DMC	3326	Rose-LT
	2	DMC	3770	Tawny-VY LT
	2	DMC	3819	Moss Green-LT
	2	DMC	3827	Golden Brown-Pale
	2	DMC	3856	Mahogany-UL VY LT
	2	DMC	5200	White
	1	DMC	818	Baby Pink
	1	DMC	3326	Rose-LT

**Floss Used for Petite Stitches:**

Symbol	Strands	Type	Number	Color
	2	DMC	310	Black
	2	DMC	402	Mahogany-VY LT
	2	DMC	3856	Mahogany-UL VY LT
	2	DMC	5200	White

**Floss Used for French Knots:**

Symbol	Strands	Type	Number	Color
	1	DMC	801	Coffee Brown-DK

**Floss Used for Back Stitches:**

Symbol	Strands	Type	Number	Color
	1	DMC	309	Rose-DK
	1	DMC	310	Black
	1	DMC	414	Steel Gray-DK
	1	DMC	801	Coffee Brown-DK

**Beads Used:**

Symbol	Type	Number	Color
	MH GS Bead	00123	Cream

♥ More Stylish Designs

♥ More FREE Patterns

♥ Much LOWER Prices

on [smarcrosstitch.com](http://smarcrosstitch.com)  
Use promocode **FRIEND7** for -7%



Usage Summary

Strands Per Skein: 6

Skein Length: 795.0 cm

Type	Number	Full	Half	Quarter	Petite	Back (cm)	Str (cm)	Spec (cm)	French	Bead	Skein
DMC	166	48	0	0	0	0.0	0.0	0.0	0	0	1.
DMC	309	0	0	0	0	52.7	0.0	0.0	0	0	1.
DMC	310	0	0	0	6	43.1	0.0	0.0	0	0	1.
DMC	312	36	0	0	0	0.0	0.0	0.0	0	0	1.
DMC	322	22	0	0	0	0.0	0.0	0.0	0	0	1.
DMC	335	195	0	0	0	0.0	0.0	0.0	0	0	1.
DMC	402	14	0	0	2	0.0	0.0	0.0	0	0	1.
DMC	414	0	0	0	0	4.0	0.0	0.0	0	0	1.
DMC	415	15	0	0	0	0.0	0.0	0.0	0	0	1.
DMC	580	138	0	0	0	0.0	0.0	0.0	0	0	1.
DMC	581	92	0	0	0	0.0	0.0	0.0	0	0	1.
DMC	762	25	0	0	0	0.0	0.0	0.0	0	0	1.
DMC	801	0	0	0	0	11.1	0.0	0.0	10	0	1.
DMC	803	36	0	0	0	0.0	0.0	0.0	0	0	1.
DMC	818	194	0	0	0	0.0	0.0	0.0	0	0	1.
DMC	819	142	0	0	0	0.0	0.0	0.0	0	0	1.
DMC	899	227	0	0	0	0.0	0.0	0.0	0	0	1.
DMC	945	57	0	0	0	0.0	0.0	0.0	0	0	1.
DMC	951	34	0	0	0	0.0	0.0	0.0	0	0	1.
DMC	975	45	0	0	0	0.0	0.0	0.0	0	0	1.
DMC	976	29	0	0	0	0.0	0.0	0.0	0	0	1.
DMC	3325	19	0	0	0	0.0	0.0	0.0	0	0	1.
DMC	3326	194	0	0	0	0.0	0.0	0.0	0	0	1.
DMC	3770	44	0	0	0	0.0	0.0	0.0	0	0	1.
DMC	3819	61	0	0	0	0.0	0.0	0.0	0	0	1.
DMC	3827	22	0	0	0	0.0	0.0	0.0	0	0	1.
DMC	3856	34	0	0	2	0.0	0.0	0.0	0	0	1.
DMC	5200	58	0	0	2	0.0	0.0	0.0	0	0	1.
MH GS Bead	00123	0	0	0	0	0.0	0.0	0.0	0	10	0.
DMC	818	164	0	0	0	0.0	0.0	0.0	0	0	1.
DMC	3326										



### Tips

- ❖ Start stitching the design in the center of the fabric and work outwards towards the edges. Arrows on the charts indicate the position of the center point.
- ❖ Each square of the chart represents a stitch.

- ❖ The color key shows the range of colors required and gives DMC thread color codes.
- ❖ Threads come in 6 stands. These should be divided into 3 sections of 2 stands to work with.

### Stitching instructions

	Symbol	How to stitch	Details
Cross Stitch			It is easier and quicker to work rows of full stitches. Work across the fabric from bottom left to upper right corners, and then back to complete the row of full crosses. Always make sure your X's slant in the same direction. For 14-18 count, use 2 strands of thread. For 11 count, use 3-4 strands of thread.
Half Stitch			You should always make sure your work slants in the same direction as the lower stitch of the cross stitch. For 14-16 count, use 2 strands of thread. For 18 count, use 1 strand of thread.
Blend			Blended threads are used to add tonality to the image. Take 1 strand of each thread (check the key). Next, thread your needle with 2 differently coloured strands and stitch
Back Stitch			Back Stitch is a row of straight stitches, made with the number of strand (check the key). Select a short, sharp, small-eyed needle for back stitch. Insert the needle at the end of the previous stitch.