



Pattern Name **Mandala**

Designed By **Barbara C.**

Recommended Fabric **Aida 14, White**

Size(s): **100w X 100h Stitches**

14 Count, 18.14w X 18.14h cm

16 Count, 15.87w X 15.87h cm

18 Count, 14.11w X 14.11h cm

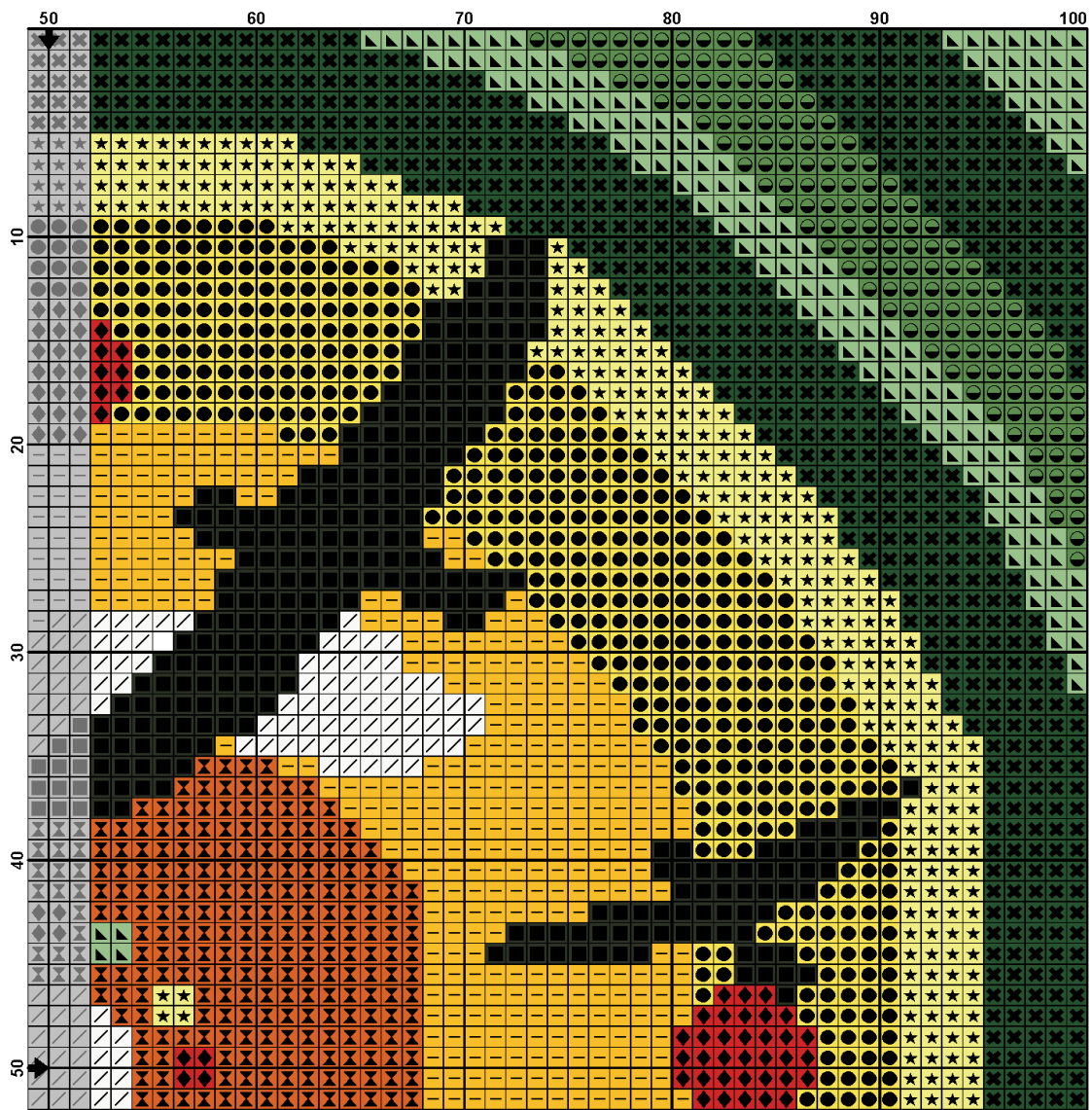
Color key for Full Stitches:

	<i>Symbol</i>	<i>Strands</i>	<i>Type</i>	<i>Number</i>	<i>Color</i>
	■	2	DMC	310	Black
	Φ	2	DMC	368	Pistachio Green-LT
	★	2	DMC	445	Lemon-LT
	◆	2	DMC	666	Christmas Red-BRT
	⌘	2	DMC	720	Orange Spice-DK
	●	2	DMC	726	Topaz-LT
	—	2	DMC	742	Tangerine-LT
	ï	2	DMC	890	Pistachio Green-UL DK
	A	2	DMC	987	Forest Green-DK
	/	2	DMC	3865	Winter White

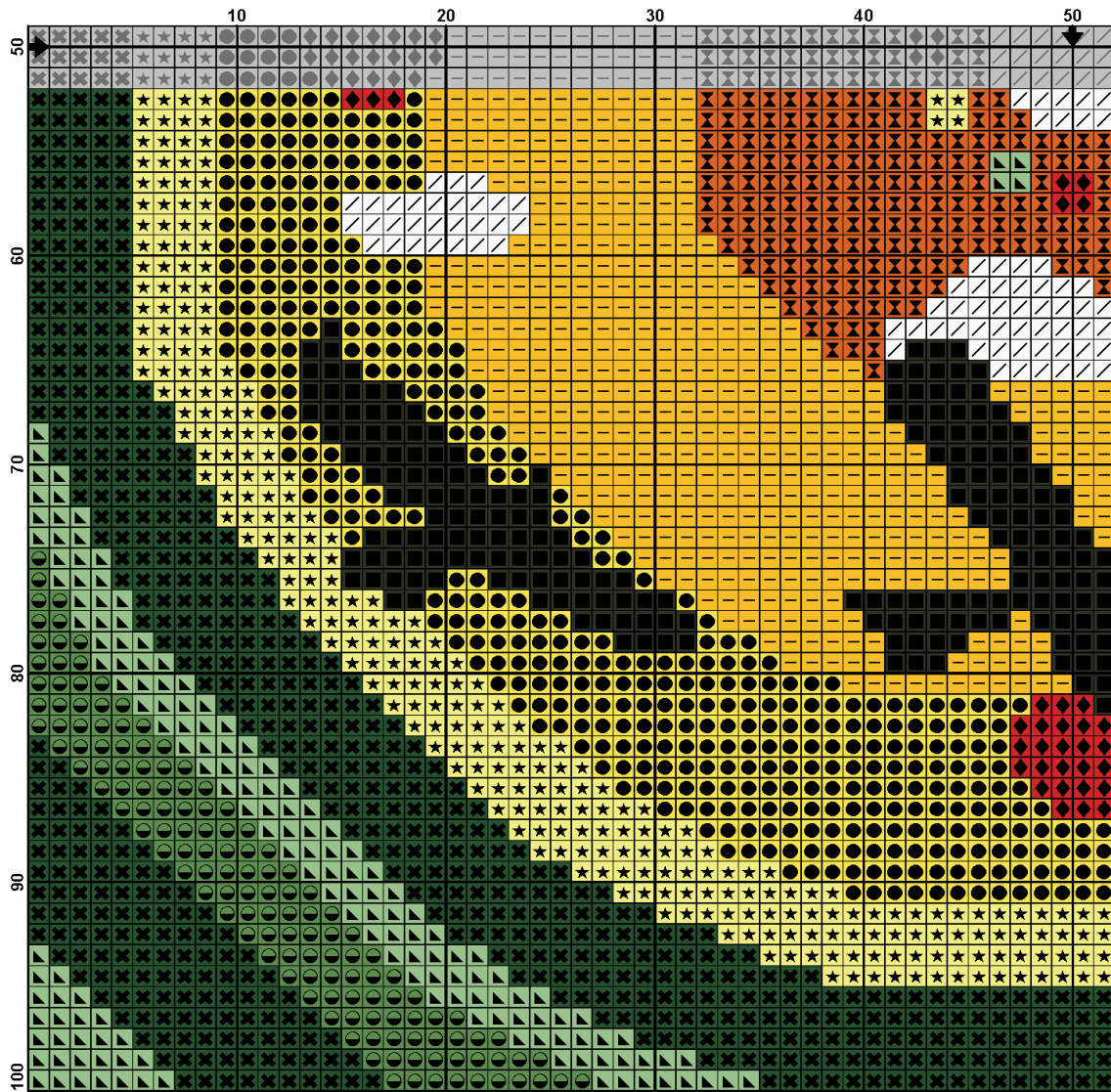
Tips

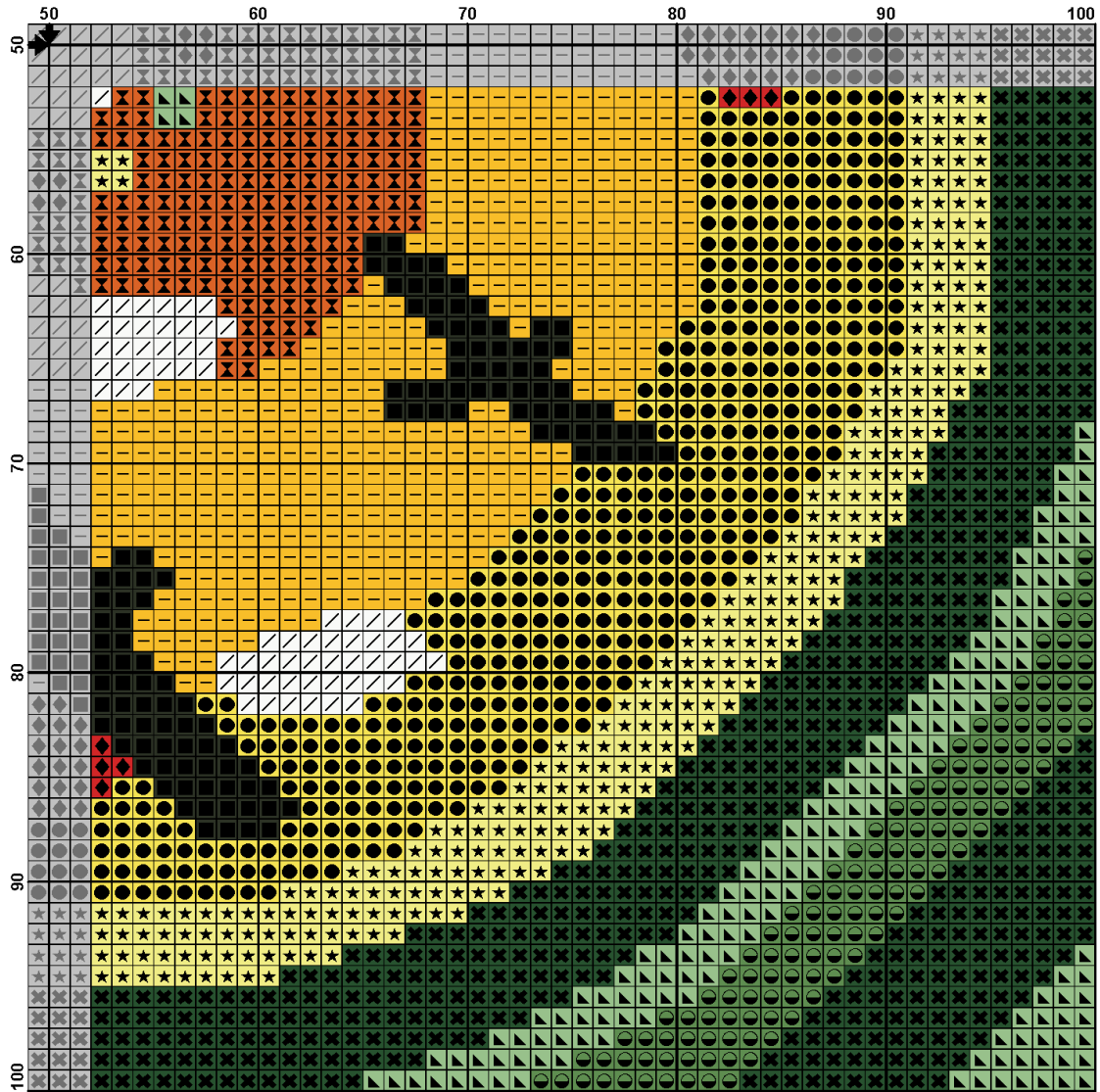
- ❖ Start stitching the design in the center of the fabric and work outwards towards the edges. Arrows on the charts indicate the position of the center point.
- ❖ Each square of the chart represents a stitch
- ❖ The color key shows the range of colors required and gives DMC thread color codes
- ❖ Threads come in 6 stands. These should be divided into 3 sections of 2 stands to work with

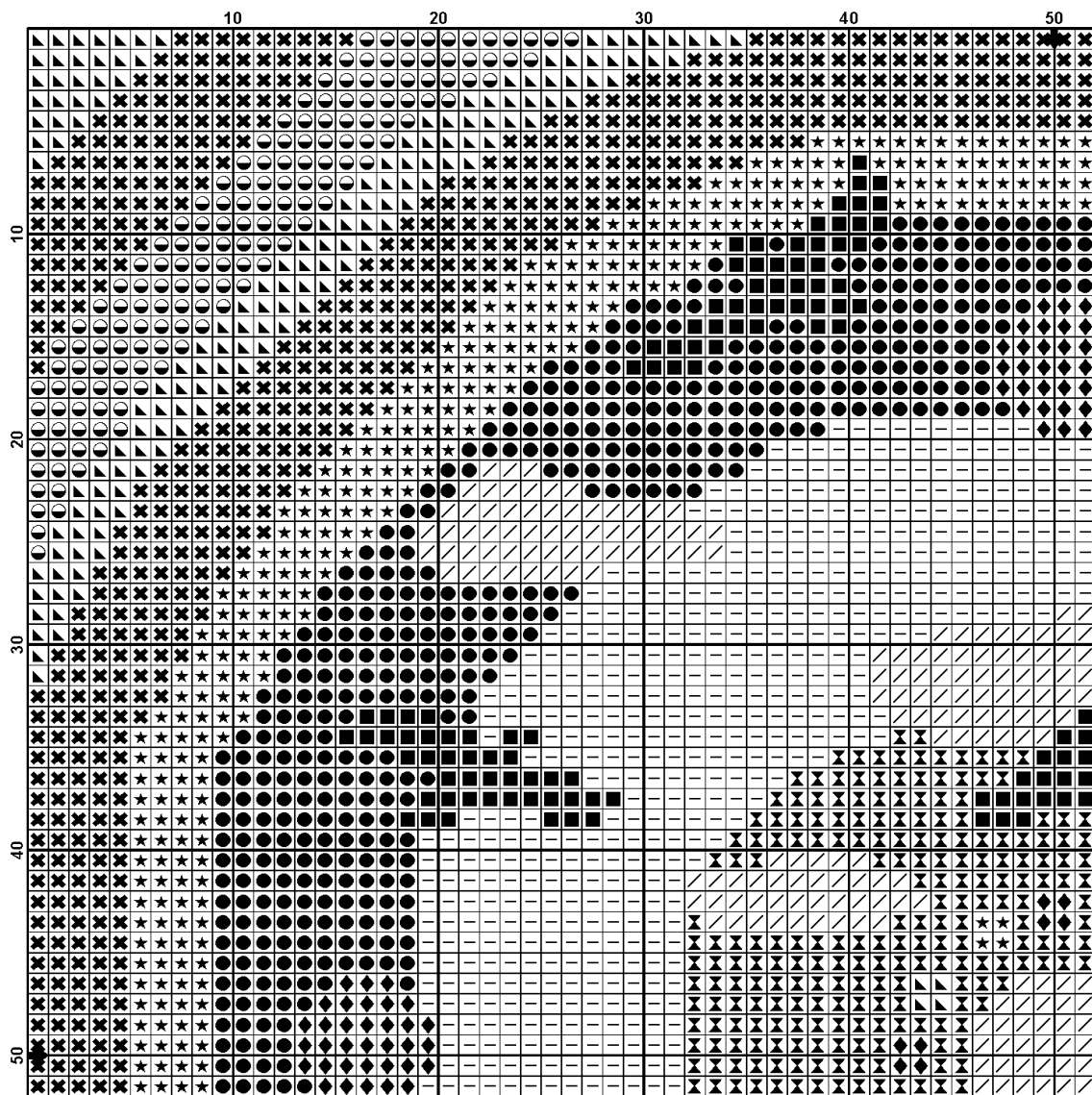


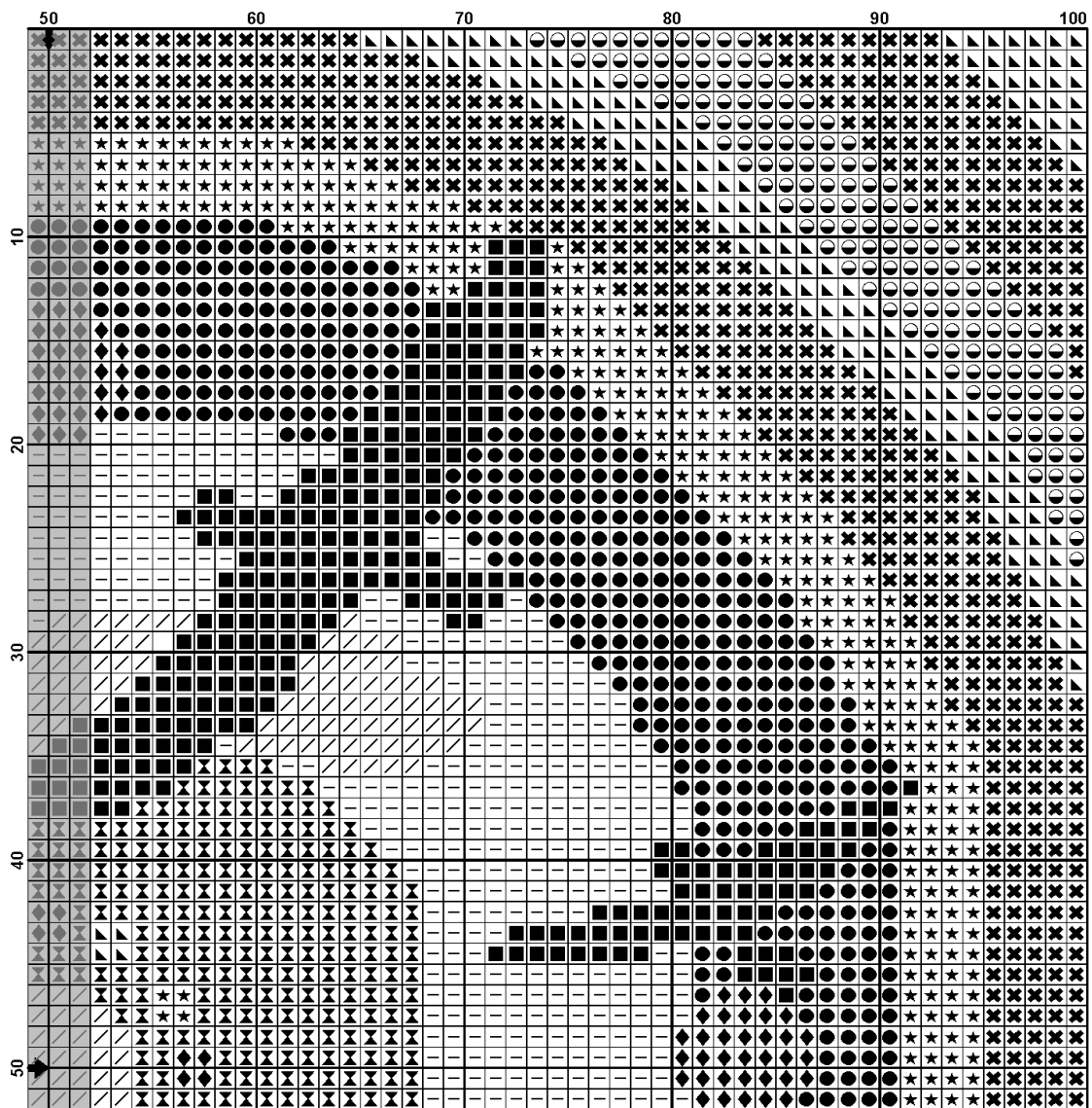


(4)









(4)

