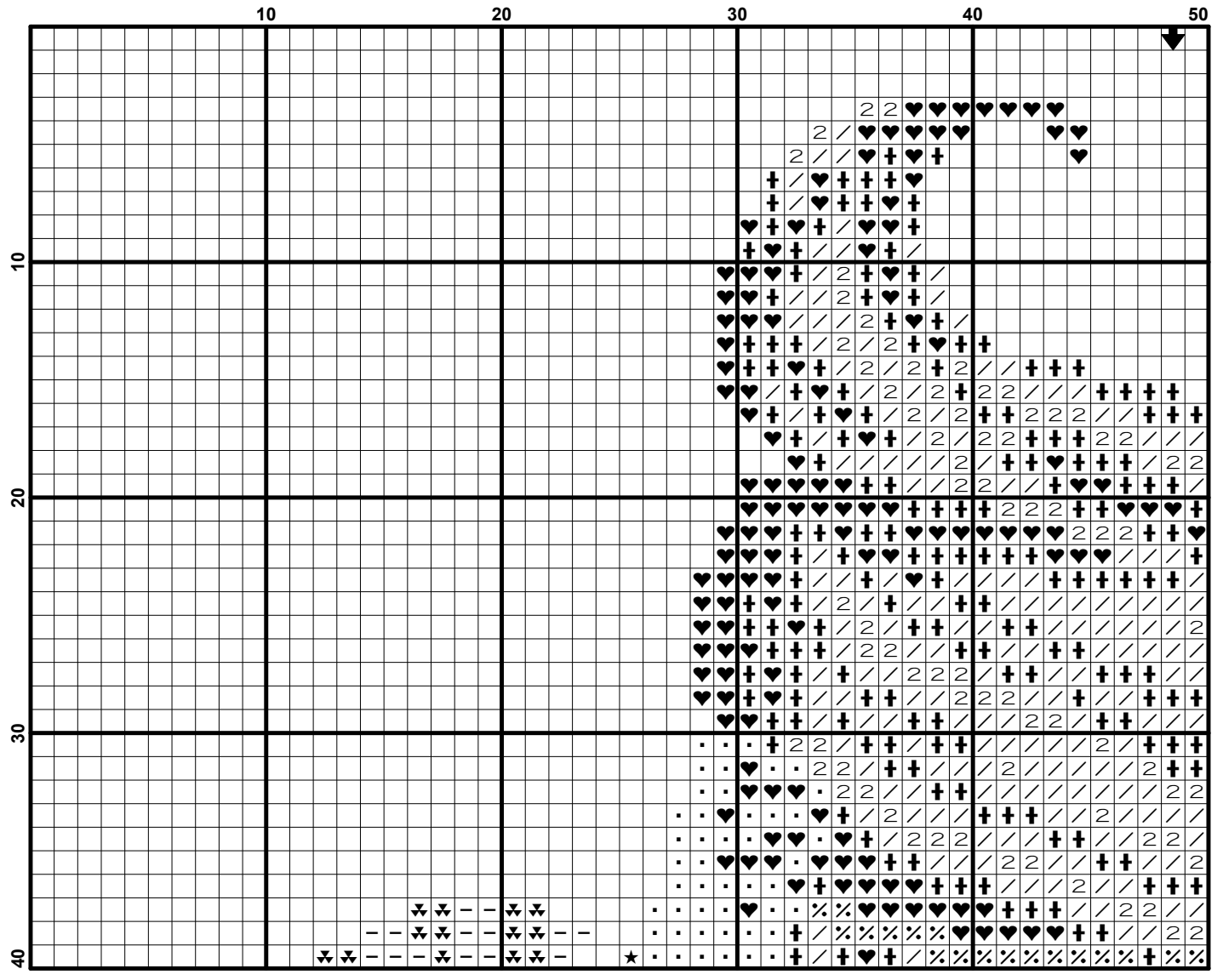
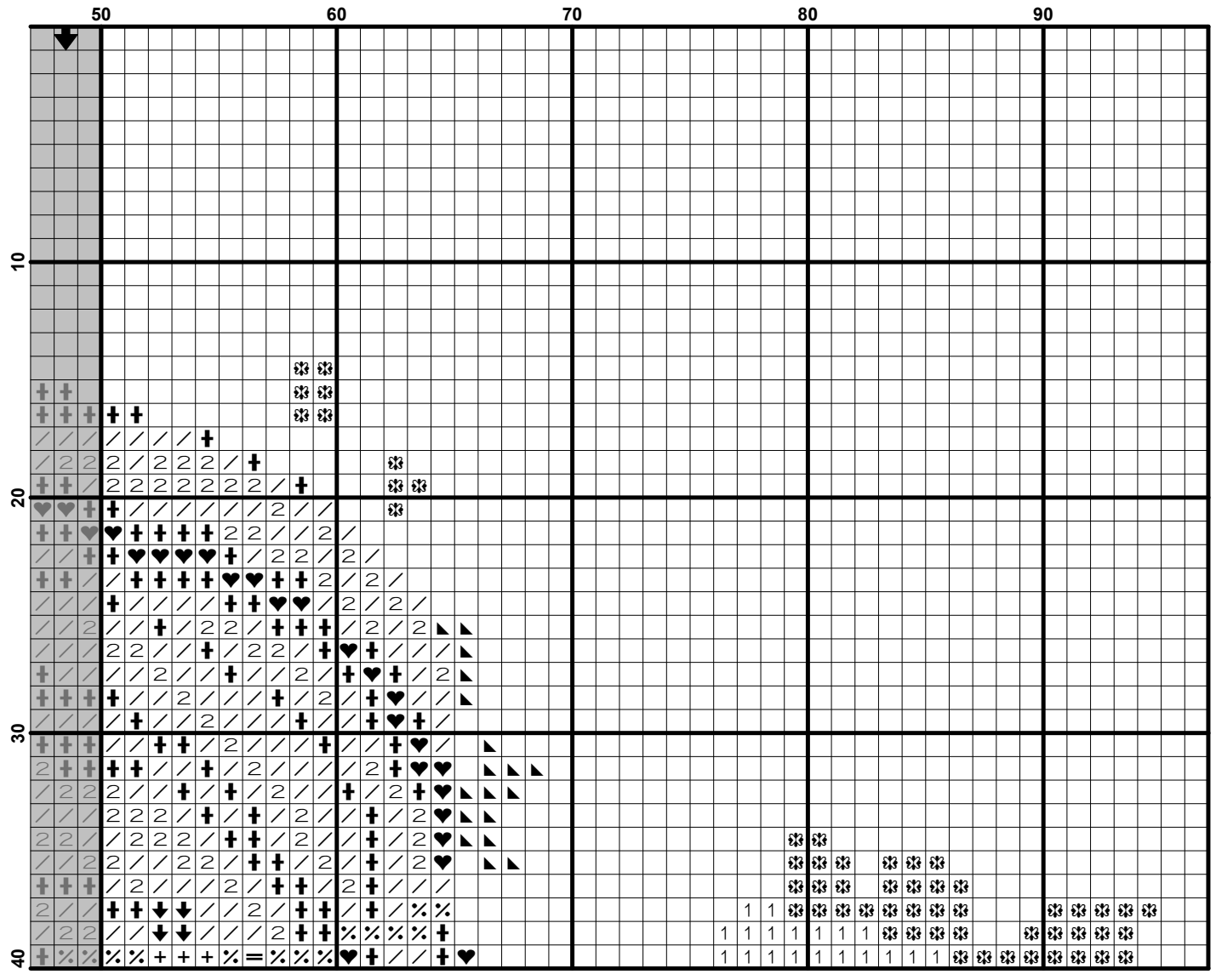


**FREE
PATTERN**

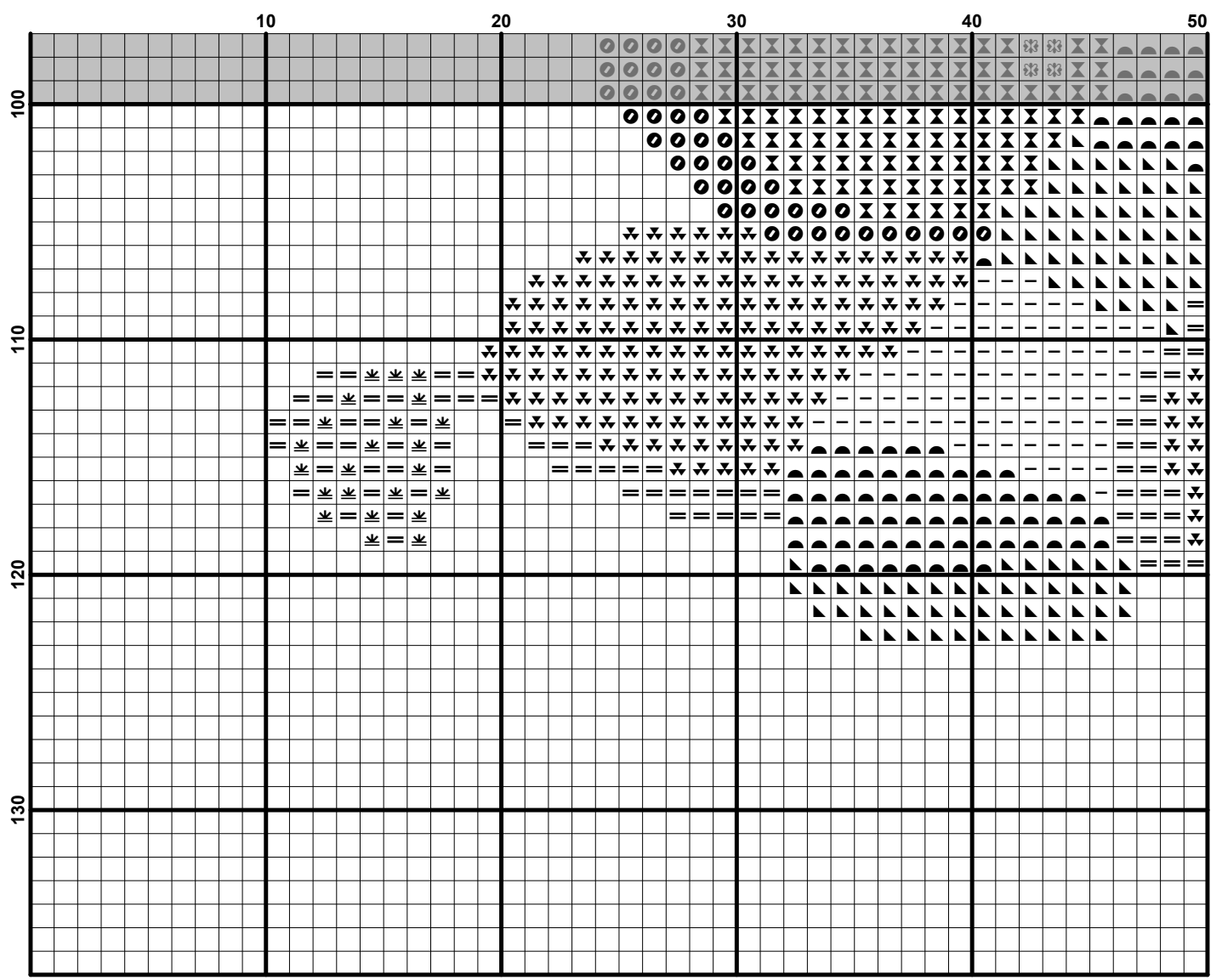


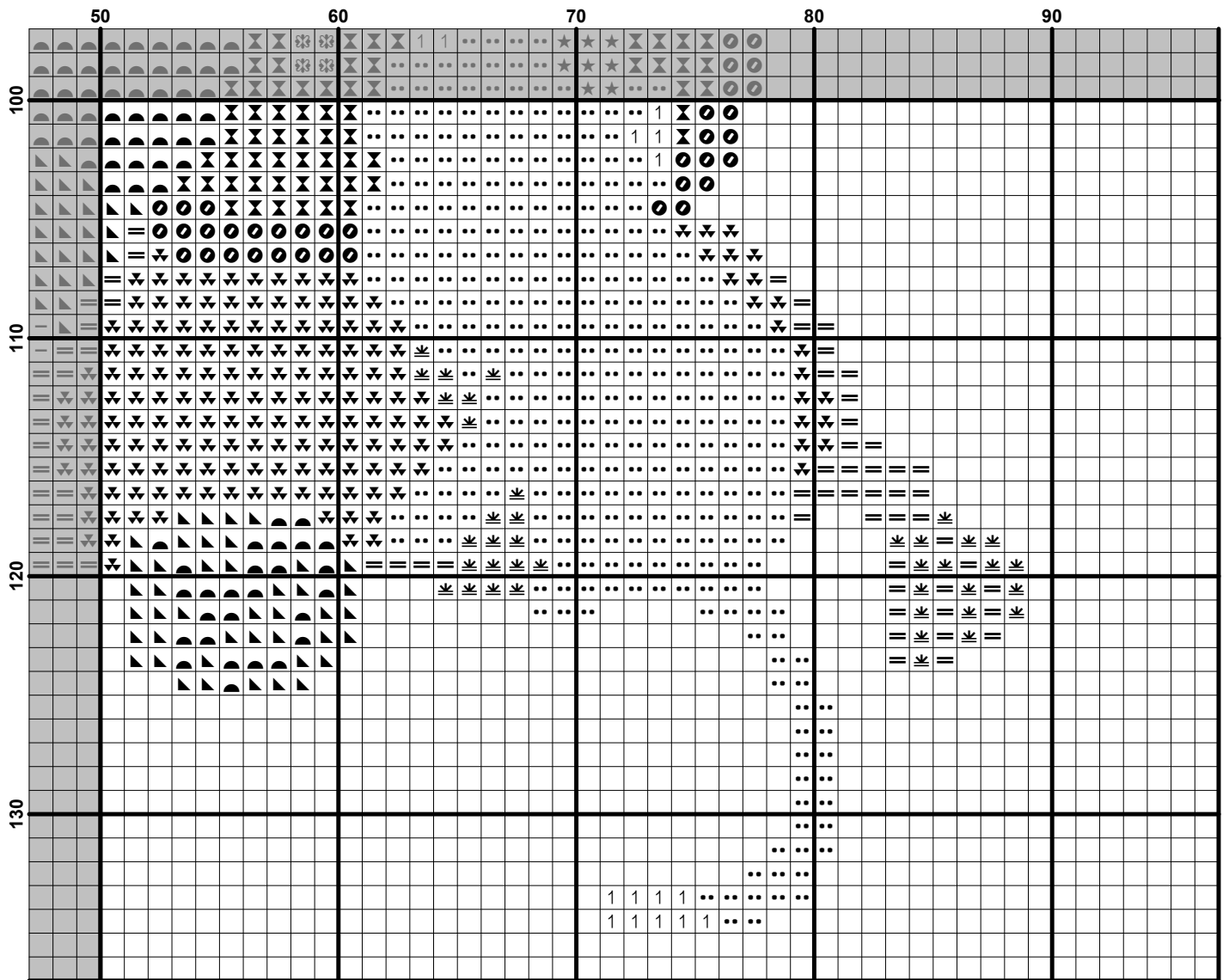
EKATERINA CHAIKOVKAYA®
by SmartCrossStitch

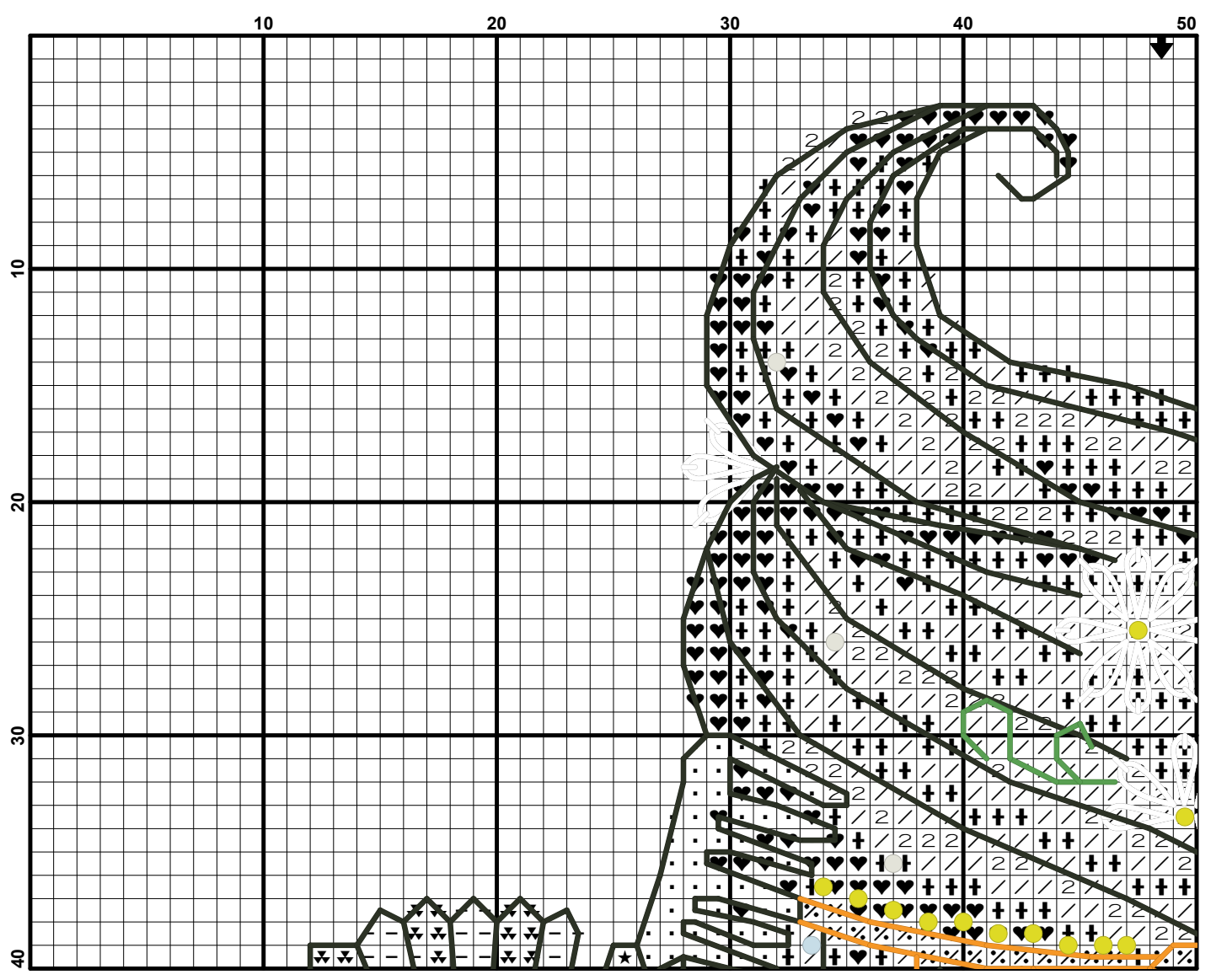


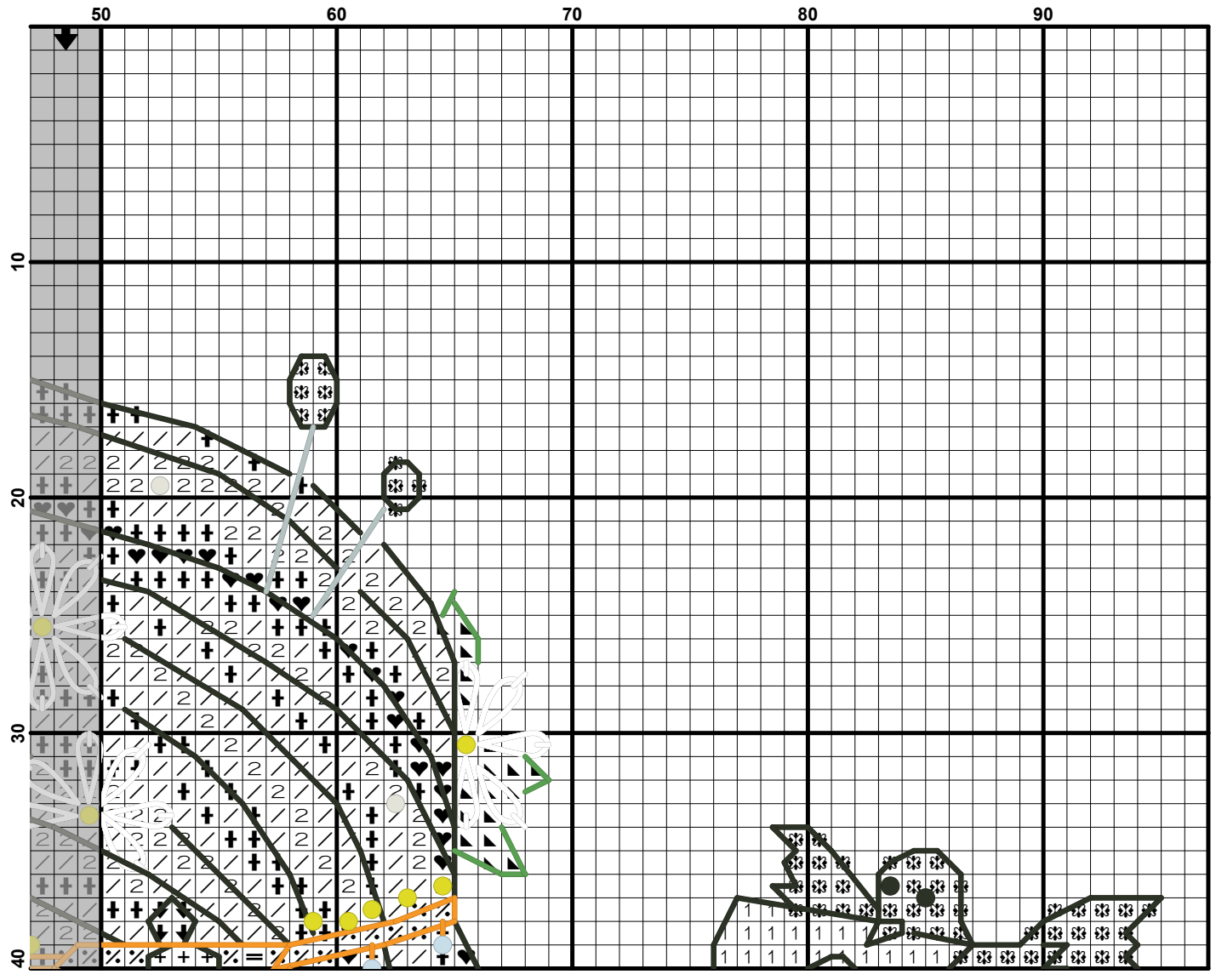


| | 10 | 20 | 30 | 40 | 50 |
|-----|----|----|----|----|----|
| 40 | | | | | |
| 50 | | | | | |
| 60 | | | | | |
| 70 | | | | | |
| 80 | | | | | |
| 90 | | | | | |
| 100 | | | | | |

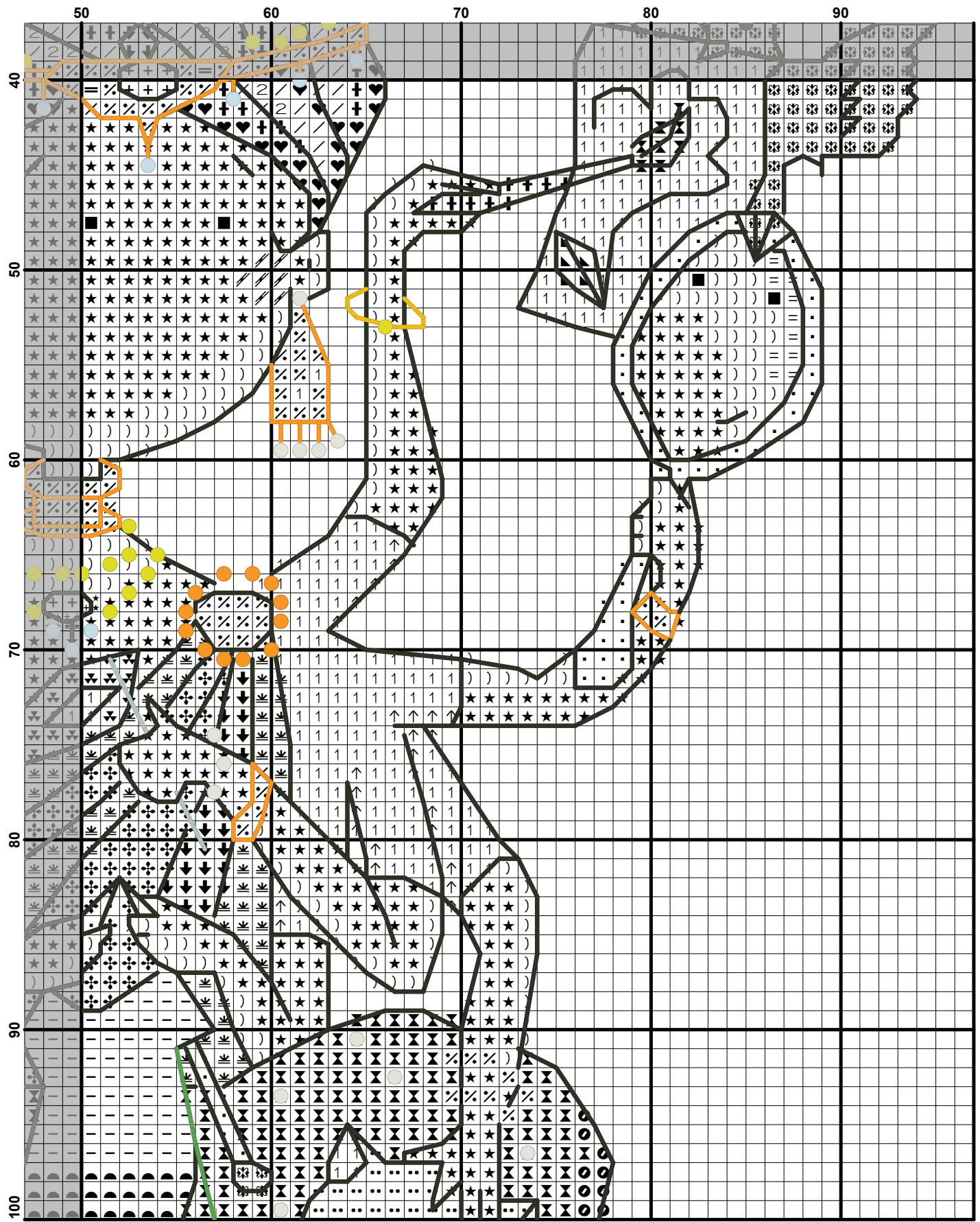


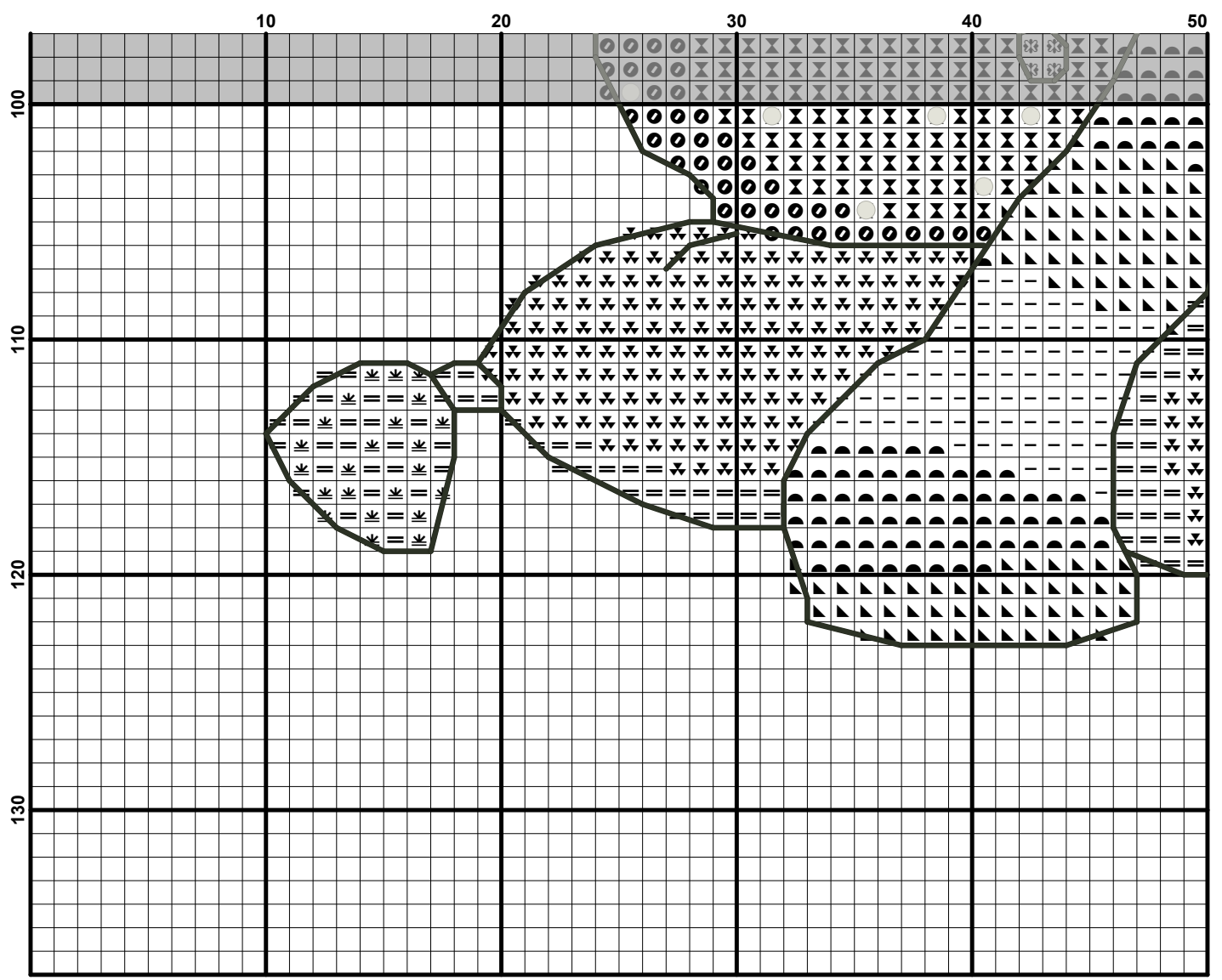


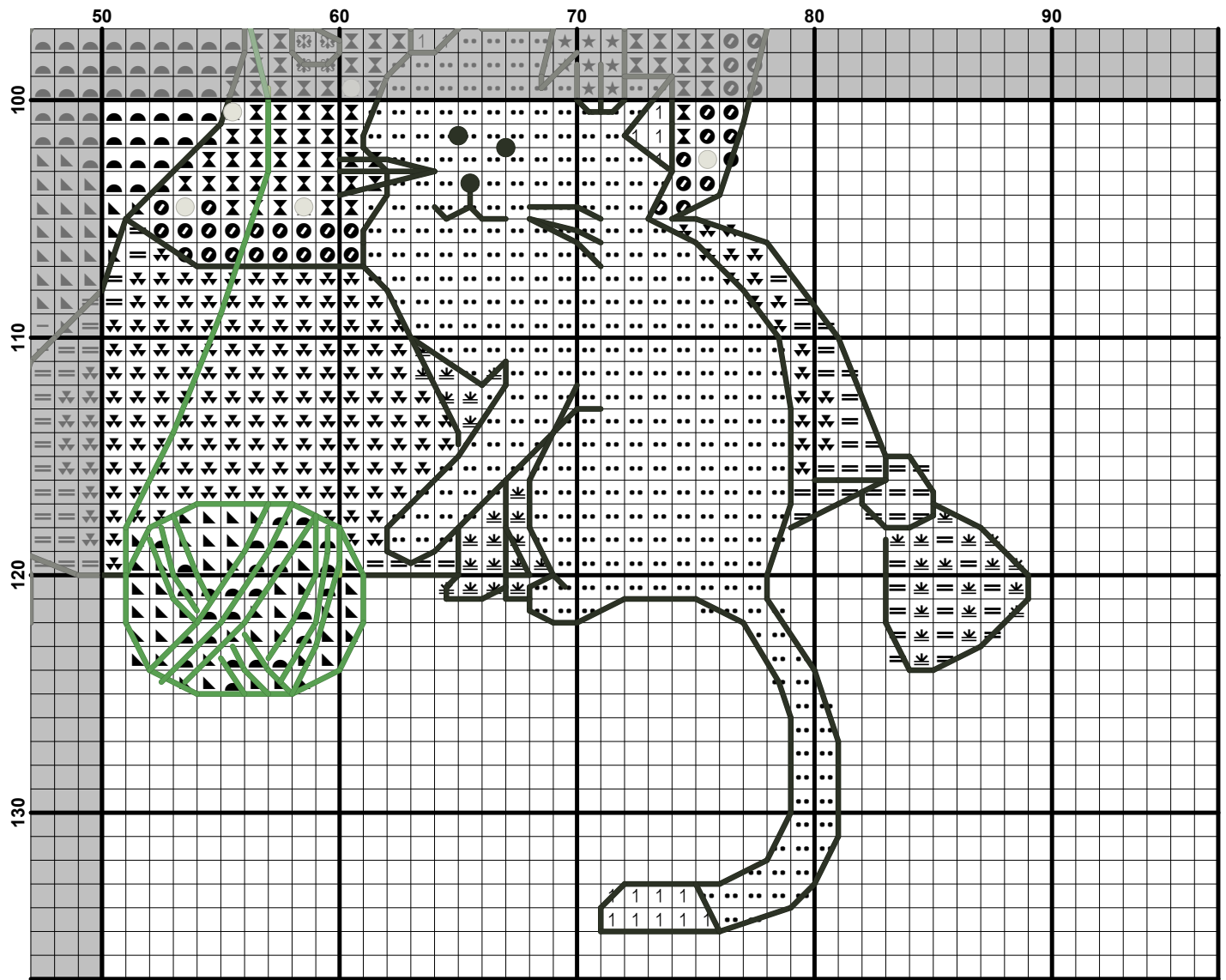








































Pattern Name: Housewife - free pattern
Designed By: Ekaterina Chaikovskaya
Company: SmartCrossStitch
Fabric: Aida 14, Cream
 89w X 132h Stitches
Size(s): 14 Count, 16.15w X 23.95h cm
 16 Count, 14.13w X 20.95h cm
 18 Count, 12.56w X 18.63h cm



Floss Used for Full Stitches:

| Symbol | Strands | Type | Number | Color |
|--|---------|------|--------|-----------------------|
|  · | 2 | DMC | 168 | Pewter-VY LT |
|  ♥ | 2 | DMC | 300 | Mahogany-VY DK |
|  ■ | 2 | DMC | 310 | Black |
|  ✕ | 2 | DMC | 355 | Terra Cotta-DK |
|  - | 2 | DMC | 702 | Christmas Green |
|  ◐ | 2 | DMC | 703 | Christmas Green-LT |
|  ◑ | 2 | DMC | 704 | Christmas Green-VY LT |
|  ✦ | 2 | DMC | 720 | Orange Spice-DK |
|  ∙∙ | 2 | DMC | 741 | Tangerine-MD |
|  / | 2 | DMC | 758 | Terra Cotta-VY LT |
|  ↓ | 2 | DMC | 900 | Burnt Orange-DK |
|  † | 2 | DMC | 920 | Copper-MD |
|  / | 2 | DMC | 921 | Copper |
|  ∼ | 2 | DMC | 922 | Copper-LT |
|  = | 2 | DMC | 943 | Bright Green-MD |
|  ★ | 2 | DMC | 945 | Tawny |
|  = | 2 | DMC | 951 | Tawny-LT |
|  ≍ | 2 | DMC | 971 | Pumpkin |
|  + | 2 | DMC | 996 | Electric Blue-MD |
|  ↑ | 2 | DMC | 3072 | Beaver Gray-VY LT |
|  ● | 2 | DMC | 3777 | Terra Cotta-VY DK |
|  ✨ | 2 | DMC | 3836 | Grape-LT |
|  ✚ | 2 | DMC | 3851 | Bright Green |
|  % | 2 | DMC | 5282 | Metallic Gold |
|  1 | 2 | DMC | B5200 | Snow White |
| ) | 1 | DMC | 945 | Tawny |
| | 1 | DMC | 951 | Tawny-LT |



Floss Used for Petite Stitches:







| Symbol | Strands | Type | Number | Color |
|--|---------|------|--------|------------------|
|  ★ | 2 | DMC | 945 | Tawny |
|  + | 2 | DMC | 996 | Electric Blue-MD |

Floss Used for French Knots:





| Symbol | Strands | Type | Number | Color |
|--|---------|------|--------|--------------|
|  ● | 1 | DMC | 310 | Black |
|  ● | 1 | DMC | 741 | Tangerine-MD |

Floss Used for Back Stitches:


| Symbol | Strands | Type | Number | Color |
|--|---------|------|--------|-----------------|
|  — | 1 | DMC | 310 | Black |
|  — | 1 | DMC | 702 | Christmas Green |

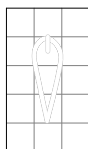
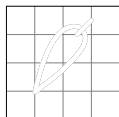
| Symbol | Strands | Type | Number | Color |
|--|---------|------|--------|-----------------------|
|   | 1 | DMC | 704 | Christmas Green-VY LT |
|   | 1 | DMC | 741 | Tangerine-MD |
|   | 1 | DMC | 5282 | Metallic Gold |







Floss Used for Straight Stitches:

| Symbol | Strands | Type | Number | Color |
|--|---------|------|--------|-----------------|
|   | 1 | DMC | 168 | Pewter-VY LT |
|   | 1 | DMC | 702 | Christmas Green |

Floss Used for Specialty Stitches:

| Symbol | Strands | Type | Number | Color |
|--|---------|------|--------|------------|
|  | 2 | DMC | B5200 | Snow White |

**Beads Used:**

| Symbol | Type | Number | Color |
|--|------------|--------|------------|
|   | MH GS Bead | 02007 | Satin Blue |
|   | MH GS Bead | 02010 | Ice |
|   | MH GS Bead | 02031 | Citron |