

Pattern Name Home Sampler

Designed By Barbara C.

Recommended Fabric Aida 14, White

Size(s): 119w X 162h Stitches

14 Count, 21.59w X 29.39h cm

16 Count, 18.89w X 25.72h cm

18 Count, 16.79w X 22.86h cm

Color key for Full Stitches:

| Symbol | Strands | Type | Number | Color | Skein |
|--------|---------|------|--------|-----------------------|-------|
| | 2 | DMC | 300 | Mahogany-VY DK | 1 |
| | 2 | DMC | 309 | Geranium | 1 |
| | 2 | DMC | 334 | Baby Blue-MD | 1 |
| | 2 | DMC | 444 | Lemon-DK | 1 |
| | 2 | DMC | 550 | Violet-VY DK | 1 |
| | 2 | DMC | 564 | Jade-VY LT | 1 |
| | 2 | DMC | 601 | Cranberry-DK | 1 |
| | 2 | DMC | 645 | Beaver Gray-VY DK | 1 |
| | 2 | DMC | 700 | Christmas Green-DK MD | 1 |
| | 2 | DMC | 729 | Old Gold-MD | 1 |
| | 2 | DMC | 741 | Tangerine-MD | 1 |
| | 2 | DMC | 758 | Terra Cotta-VY LT | 1 |
| | 2 | DMC | 912 | Nile Green-DK | 1 |
| | 2 | DMC | 920 | Copper-MD | 1 |
| | 2 | DMC | 945 | Tawny | 1 |
| | 2 | DMC | 947 | Burnt Orange | 1 |
| | 2 | DMC | 976 | Golden Brown-MD | 1 |
| | 2 | DMC | 3716 | Dusty Rose-VY LT | 1 |
| | 2 | DMC | 3752 | Antique Blue-VY LT | 1 |
| | 2 | DMC | 3755 | Baby Blue | 1 |
| | 2 | DMC | 3765 | Peacock Blue-VY DK | 1 |
| | 2 | DMC | 3805 | Cyclamen Pink | 1 |
| | 2 | DMC | 3835 | Grape-MD | 1 |
| | 2 | DMC | 3843 | Electric Blue | 1 |
| | 2 | DMC | B5200 | Snow White | 1 |



Additional keys on the chart:



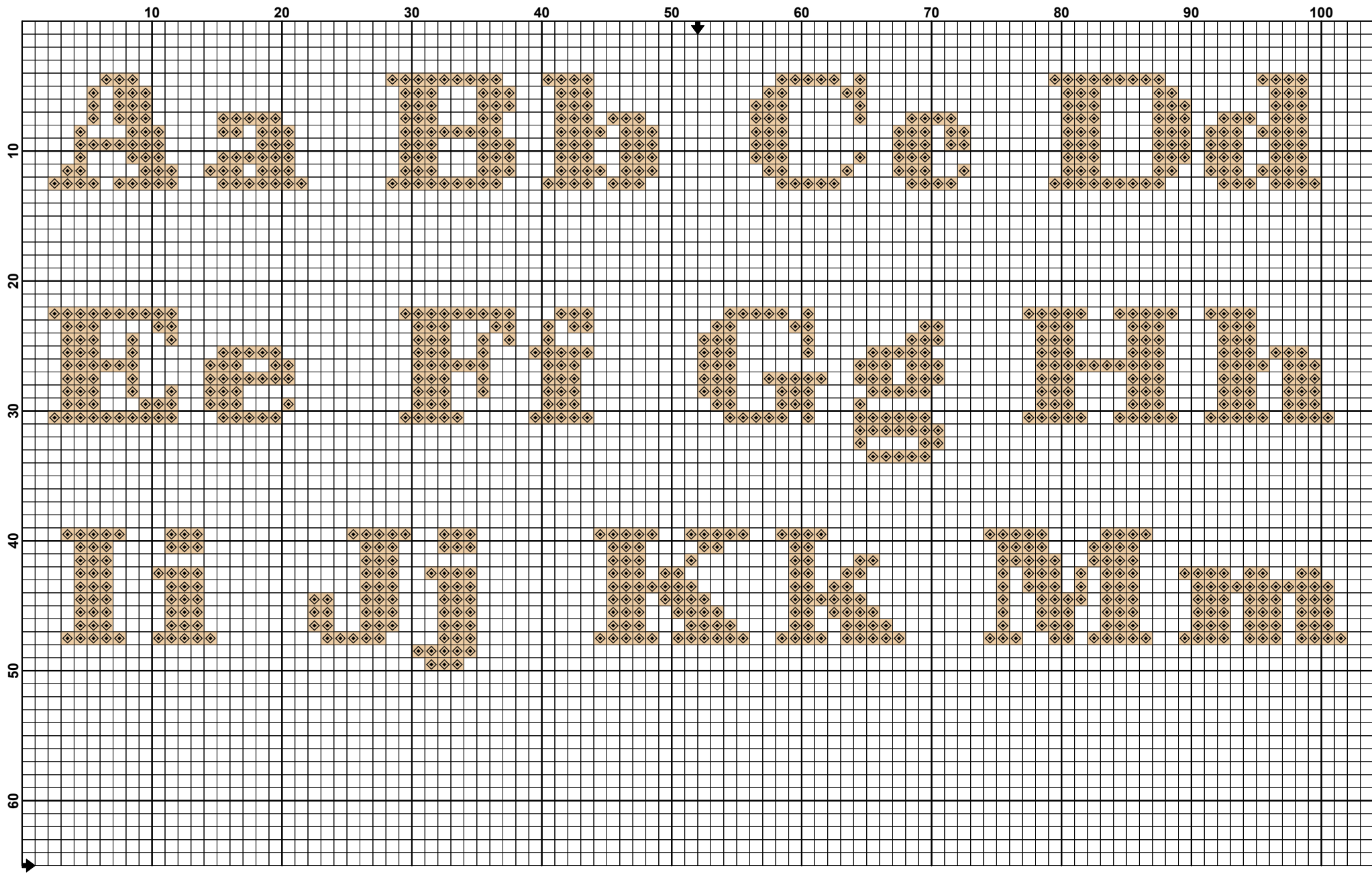
Area for placing Family Name

Tips

- ❖ Start stitching the design in the center of the fabric and work outwards towards the edges. Arrows on the charts indicate the position of the center point.
- ❖ Each square of the chart represents a stitch.
- ❖ The color key shows the range of colors required and gives DMC thread color codes.
- ❖ Threads come in 6 stands. These should be divided into 3 sections of 2 stands to work with.









10 20 30 40 50 60 70 80 90 100 110 120





