

Hand Made Sampler



Designer Irina Neskorodeeva
by SmartCrossStitch

<https://smartcrosstitch.com/irinan eskorodeeva.html>

Size: 185 x 144 stitches

Recommended Fabric: evenweave cream or dark ecru 28(14)
count

Number of colors: 23 + 6 blends

Stitch Types: cross stitch, half stitch, back stitch



Full Cross:

	Symbol	Strands	DMC
	■	2	310
	∞	2	322
	⊙	2	469
	◻	2	470
	▼	2	471
	Z	2	472
	⊛	2	606
	5	2	666
	◆	2	728
	1	2	746
	▨	2	783
	●	2	803
	♥	2	937
	⊙	2	975
	⌵	2	976
	⌵	2	3705
		2	3706
	#	2	3755
	↙	2	3801
	∴	2	3827
	⊛	2	3853
	\$	2	3854
	7	2	3855
	◇	1	746
		1	3755
	3	1	3853
		1	728
	↑	1	728
		1	746
	✕	1	975
		1	3853
	♡	1	3855
		1	746
	a	1	803
		1	322

Back Stitch:

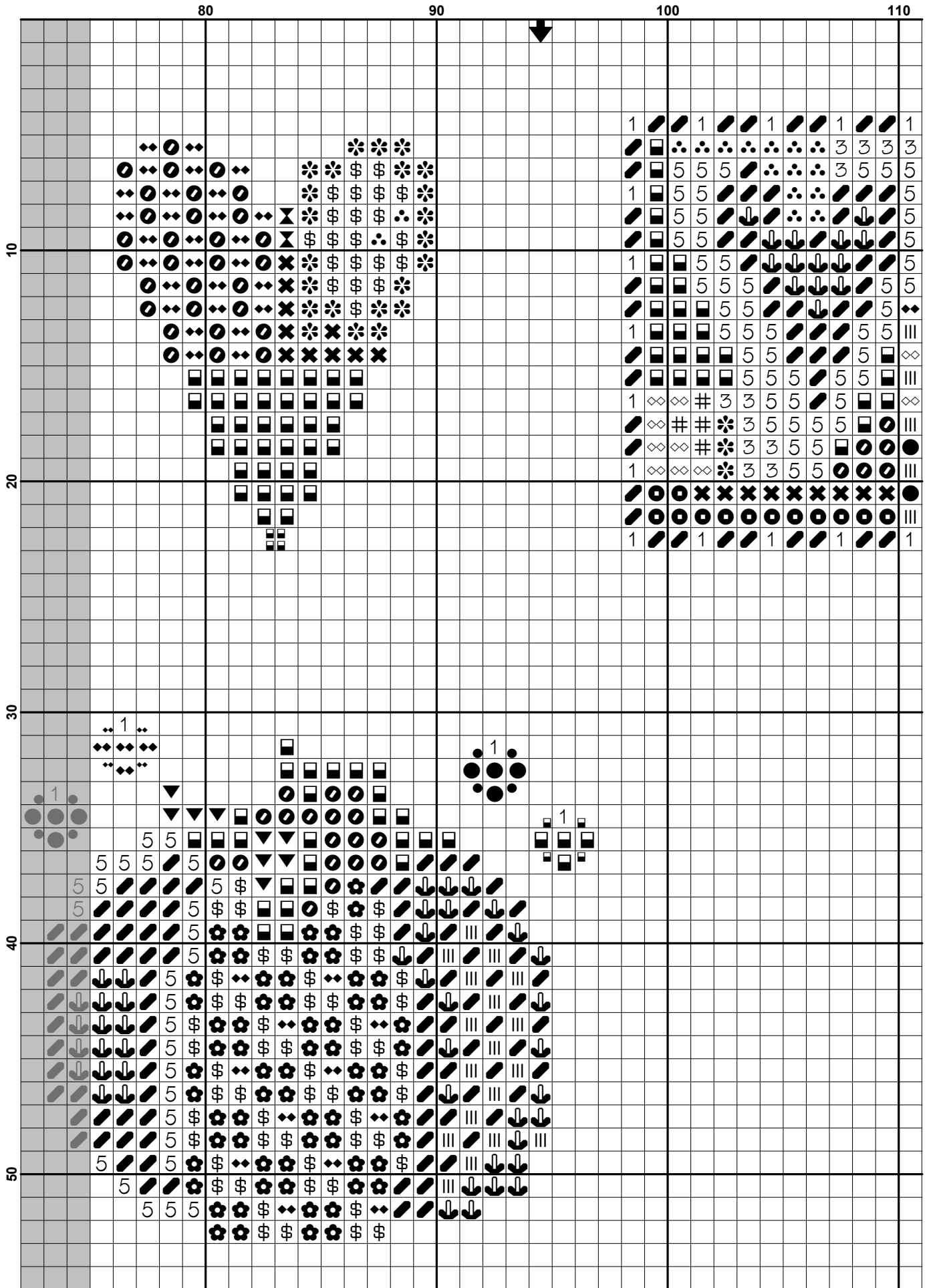
	Symbol	Strands	DMC
	—	1	310
	—	1	606
	—	1	803

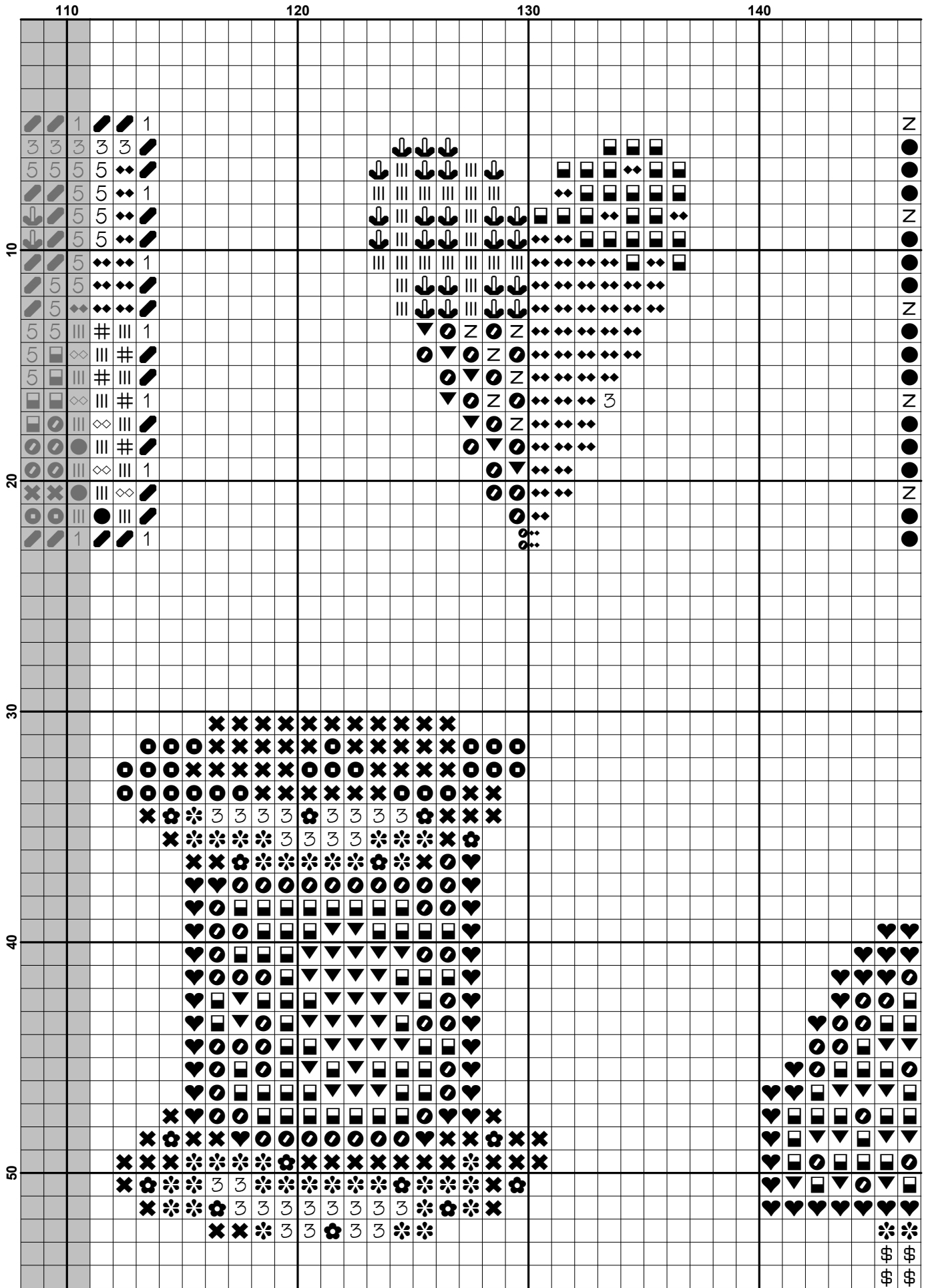
French Knots:

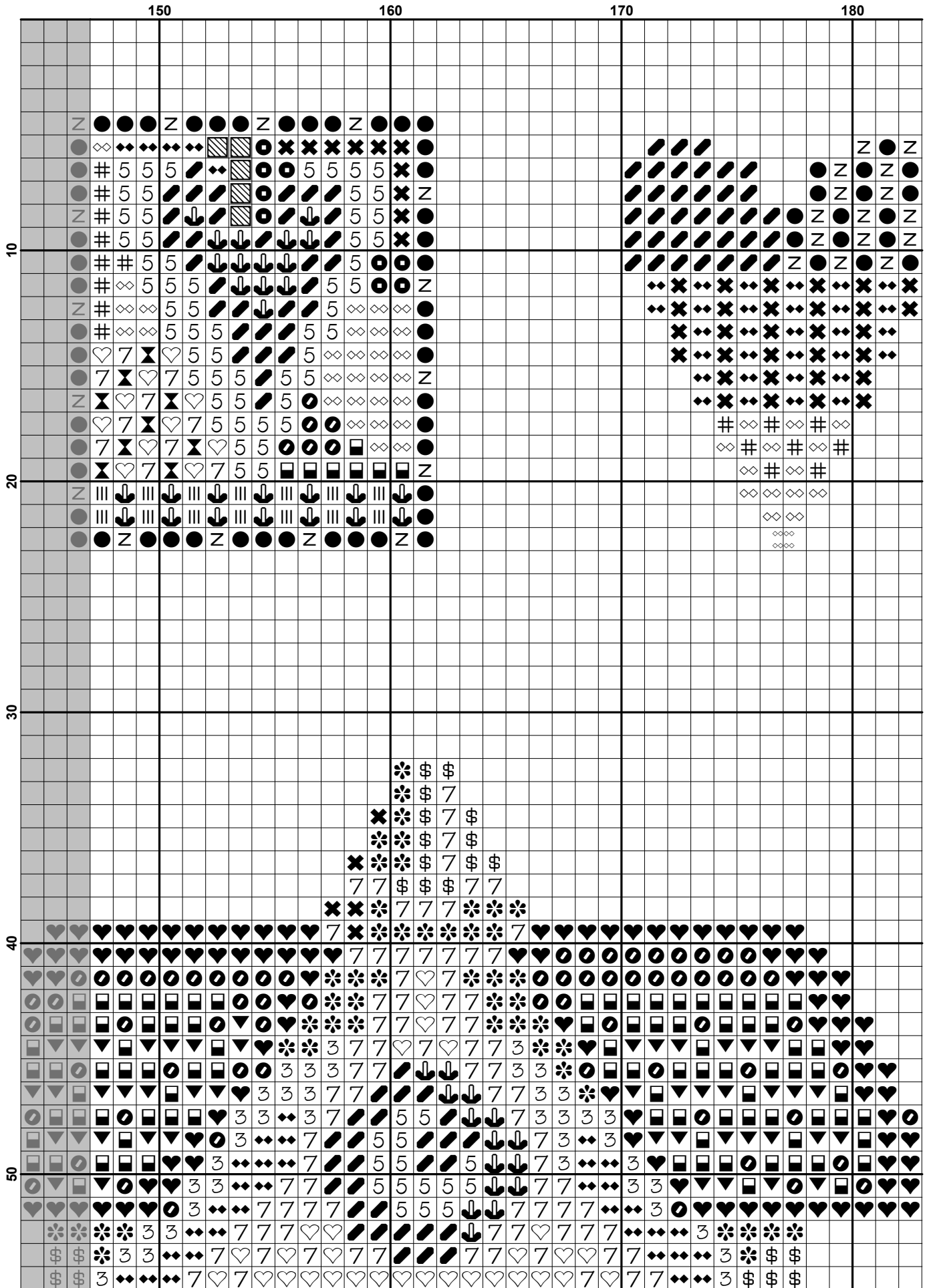
	Symbol	Strands	DMC
	●	1	310
	●	1	606
	●	1	746
	●	1	803
	●	1	975
	●	1	3705
	●	1	3755

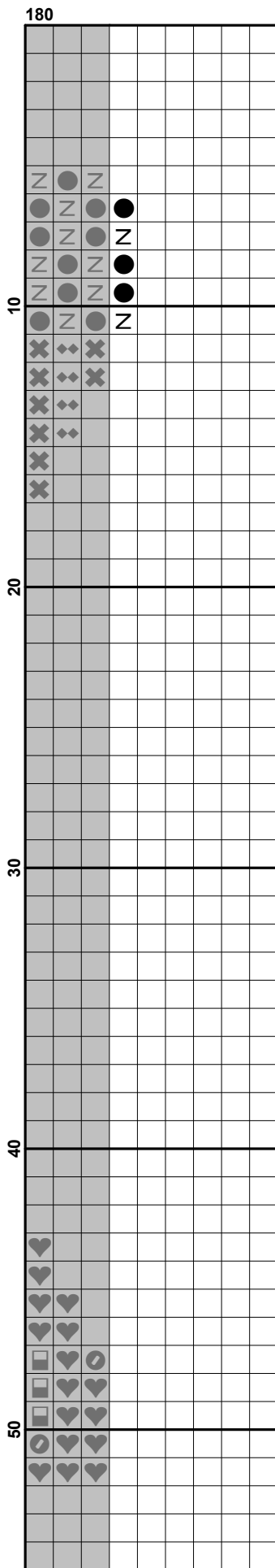
10 20 30

10 20 30 40 50









10 20 30

60

70

80

90

100

The diagram is a grid with columns labeled 10, 20, 30 and rows labeled 60, 70, 80, 90, 100. The grid contains various symbols including diamonds, arrows, flowers, hearts, numbers, and letters. A large arrow points to the right on the left side of the grid.

