



#### YOU'LL NEED:

- ❖ 1 sheet white 7-count plastic canvas
- ❖ Yarn as listed in color key
- ❖ #16 tapestry needle
- ❖ Red silk 0.3" ribbon, 7.9" long  
or
- ❖ 0.5 sheet white 10-count plastic canvas
- ❖ Yarn as listed in color key
- ❖ #18 tapestry needle
- ❖ Red silk 0.3" ribbon, 7.9" long

#### DETAILS:

- ❖ **A – House Front and Back**  
(22 w x 30 h holes)  
Cut 2 and work according to graph
- ❖ **B1 – House Side 1**  
(14 w x 21 h holes)  
Cut 1 and work according to graph
- ❖ **B2 – House Side 2**  
(14 w x 21 h holes)  
Cut 1 and work according to graph
- ❖ **C – House Roof**  
(16 w x 19 h holes)  
Cut 2 and work according to graph

#### ❖ **D – House Bottom**

(22-hole x 14 hole)

Cut 1 and work according to graph

#### SIZE(S):

- ❖ 7-count plastic canvas:  
7.9 x 7.6 x 11 cm (3.1" x 3" x 4.3")  
or
- ❖ 10-count plastic canvas:  
5.6 x 5.3 x 7.6 cm (2.2" x 2.1" x 3")

#### INSTRUCTIONS:

- ❖ Cut plastic canvas according to the graphs.
- ❖ Stitch remaining pieces following the pattern.
- ❖ When background stitching is completed work Backstitches on Front and Back and make a French knot as the door handle.
- ❖ Overcast details edges with white as shown on the graphs.

#### **House Assembling**

- ❖ Using white whipstitch Back, Front and sides to Bottom.
- ❖ Join details edges forming the house.
- ❖ Join Roof exposed edges with white.
- ❖ Thread the ribbon through the roof ridge and fix it on the back side  
Attach the roof to the house: you can use blind stitch or stick it down with transparent glue



## COLOR KEY:

### CONTINENTAL STITCHES

	<b>Color</b>	<b>Yards</b> 7 ct/10 ct	<b>Meters</b> 7 ct/10 ct
	Red	9 / 6	8 / 5
	Brown	22 / 15	20 / 13
	White	17 / 11	15 / 10
	Yellow	7 / 3.5	6 / 5
	Beige	25 / 17	23 / 15

### BACKSTITCHES

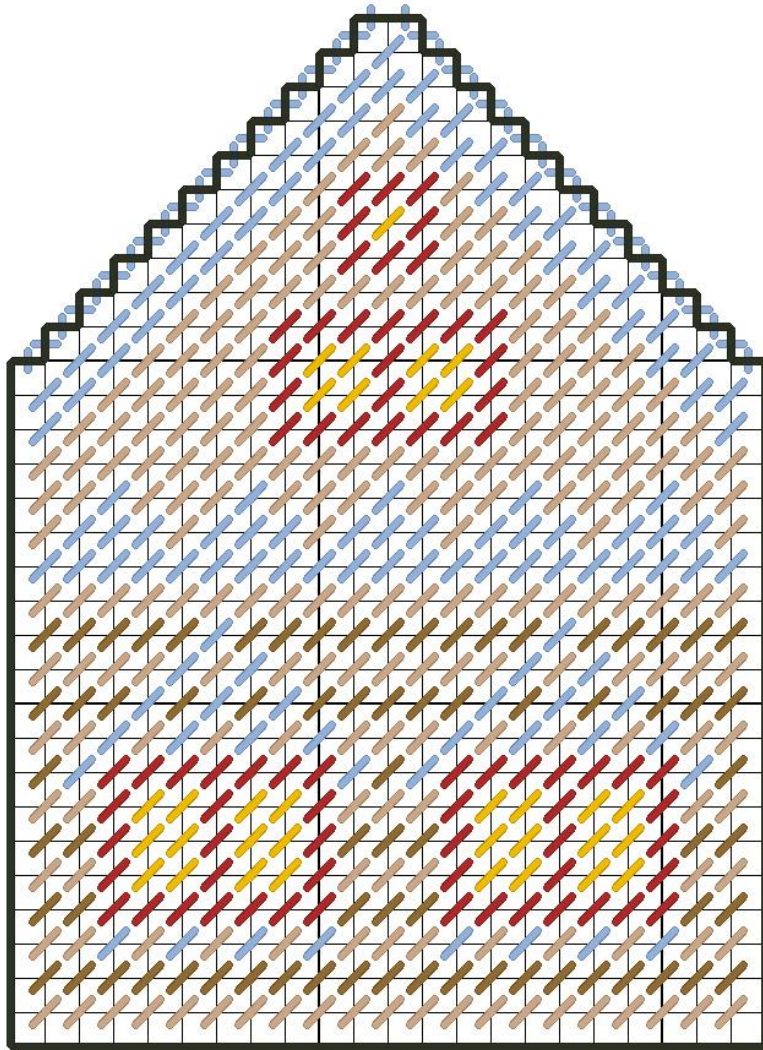
 White

### FRENCH KNOTS

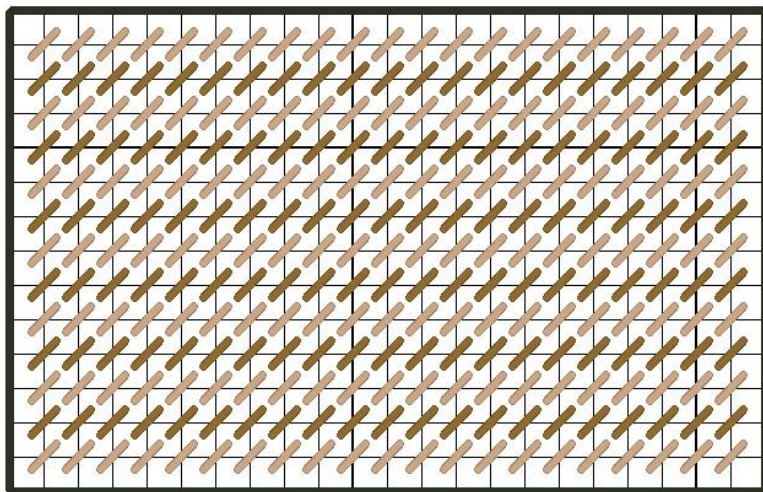
 Brown



A – HOUSE FRONT AND BACK 22 W x 30 H HOLES, 2 PC

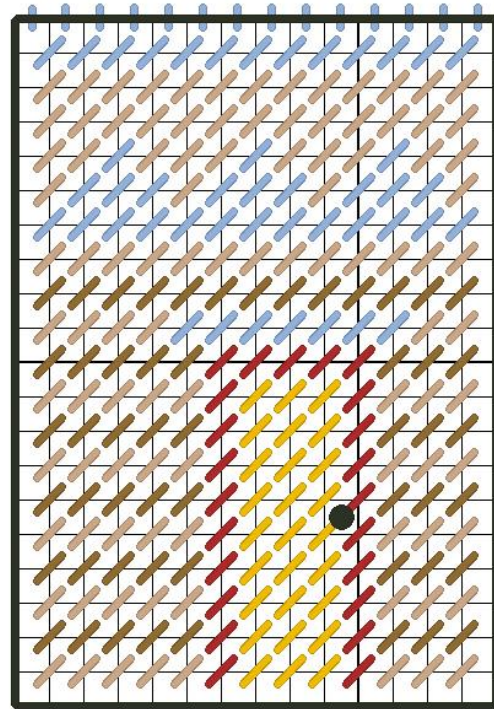
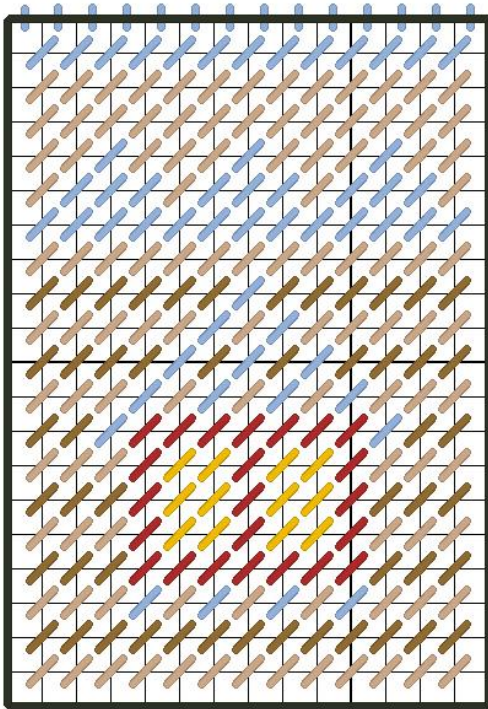


D – HOUSE BOTTOM 22 W X 14 H HOLES, 1 PC





B1 AND B2 – HOUSE SIDES 14 W X 21 H HOLES, 2 PC



C – HOUSE ROOF 16 W X 19 H HOLES, 2 PC

