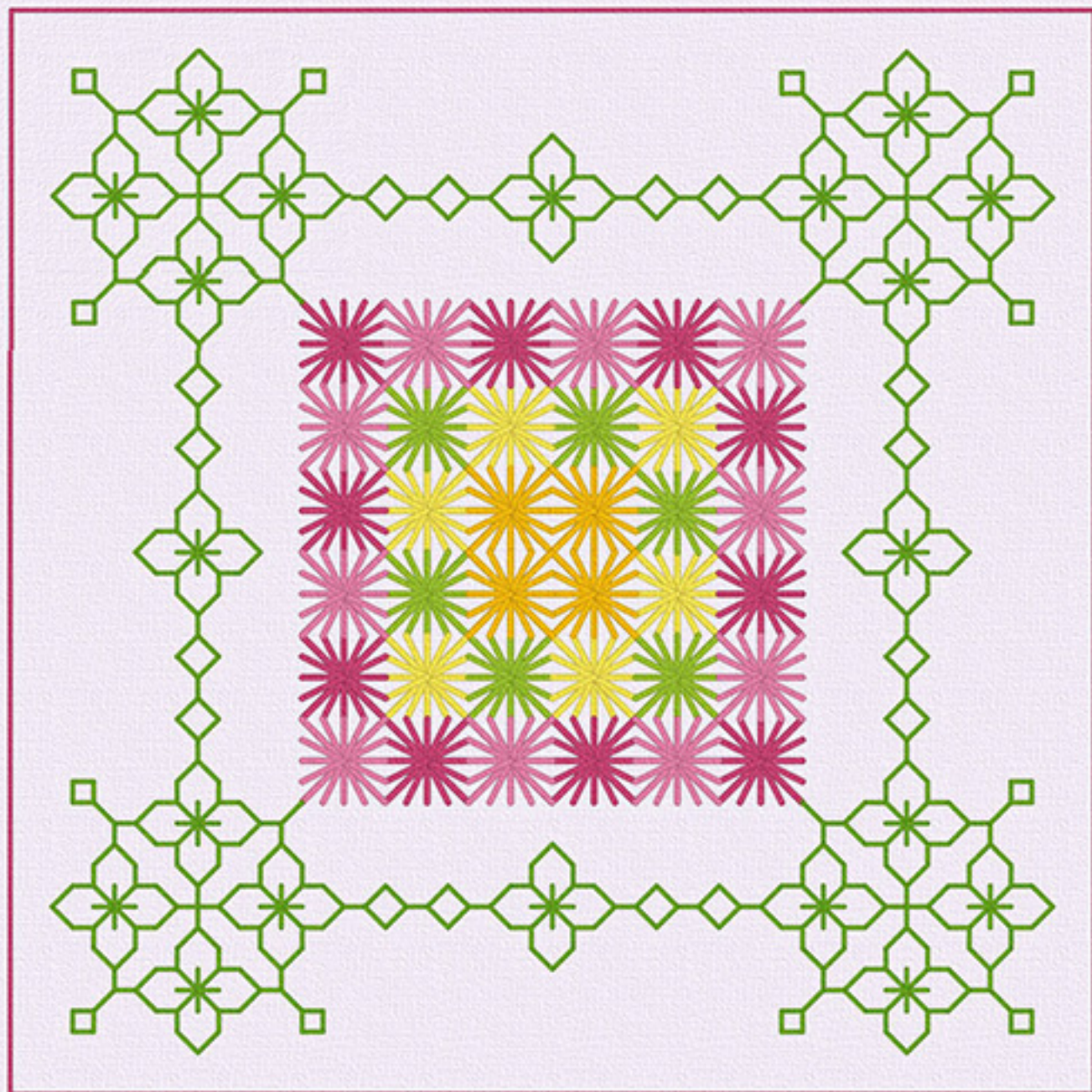
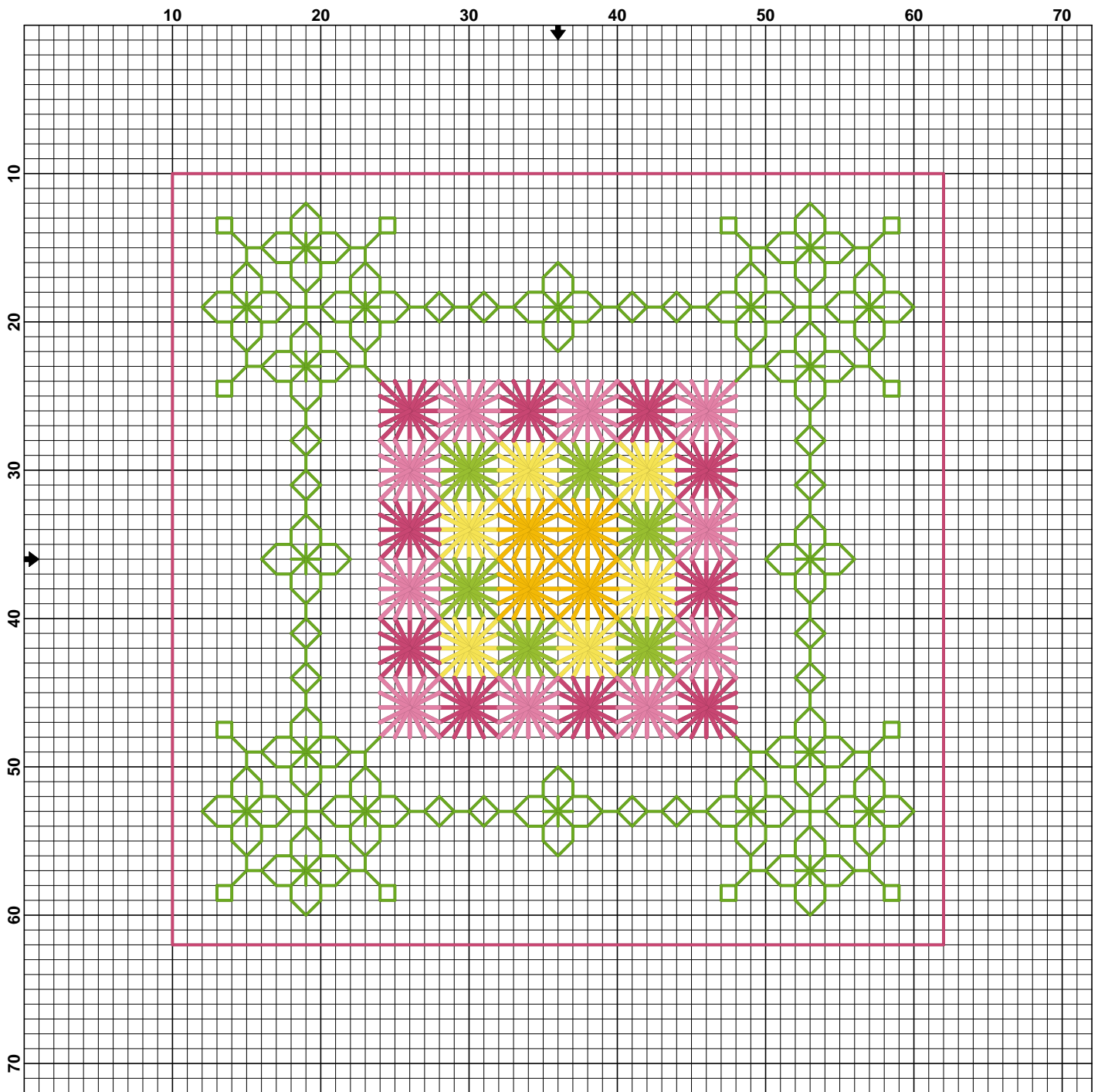




HELENA  
CHATTE  
by SmartCrossStitch







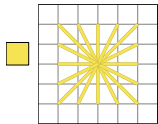
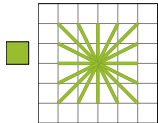
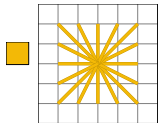
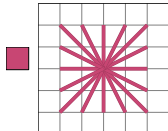
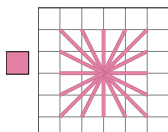
Designer Algerian eyes Ornament  
Helena Chatte

Copyright: SmartCrossStitch by Elena Dushkina  
Fabric: Aida 16, Murano 32  
52w X 52h Stitches

**Back Stitch**

Symbol	Strands	Type	Number	Color
	1	DMC	906	Parrot Green-MD
	2	DMC	3804	Cyclamen Pink-DK

**Algerian eyes elements**

Symbol	Strands	Type	Number	Color
	1	DMC	726	Topaz-LT
	1	DMC	907	Parrot Green-LT
	1	DMC	972	Canary-DK
	1	DMC	3804	Cyclamen Pink-DK
	1	DMC	3806	Cyclamen Pink-LT