

♥ More **Stylish** Designs

♥ More **FREE** Patterns

♥ Much **LOWER** Prices

on smarcrosstitch.com

Use promocode **FRIEND7** for -7%



Rose ornament

Designed by Alisa Okneas

Recommended Fabric: Aida 14 white

Size(s): 174w X 158h Stitches

14 Count, 31.57w X 28.67h cm

16 Count, 27.62w X 25.08h cm

18 Count, 24.55w X 22.30h cm

♥ More Stylish Designs

♥ More FREE Patterns

♥ Much LOWER Prices

on smartercrossstitch.com

Use promocode **FRIEND7** for -7%

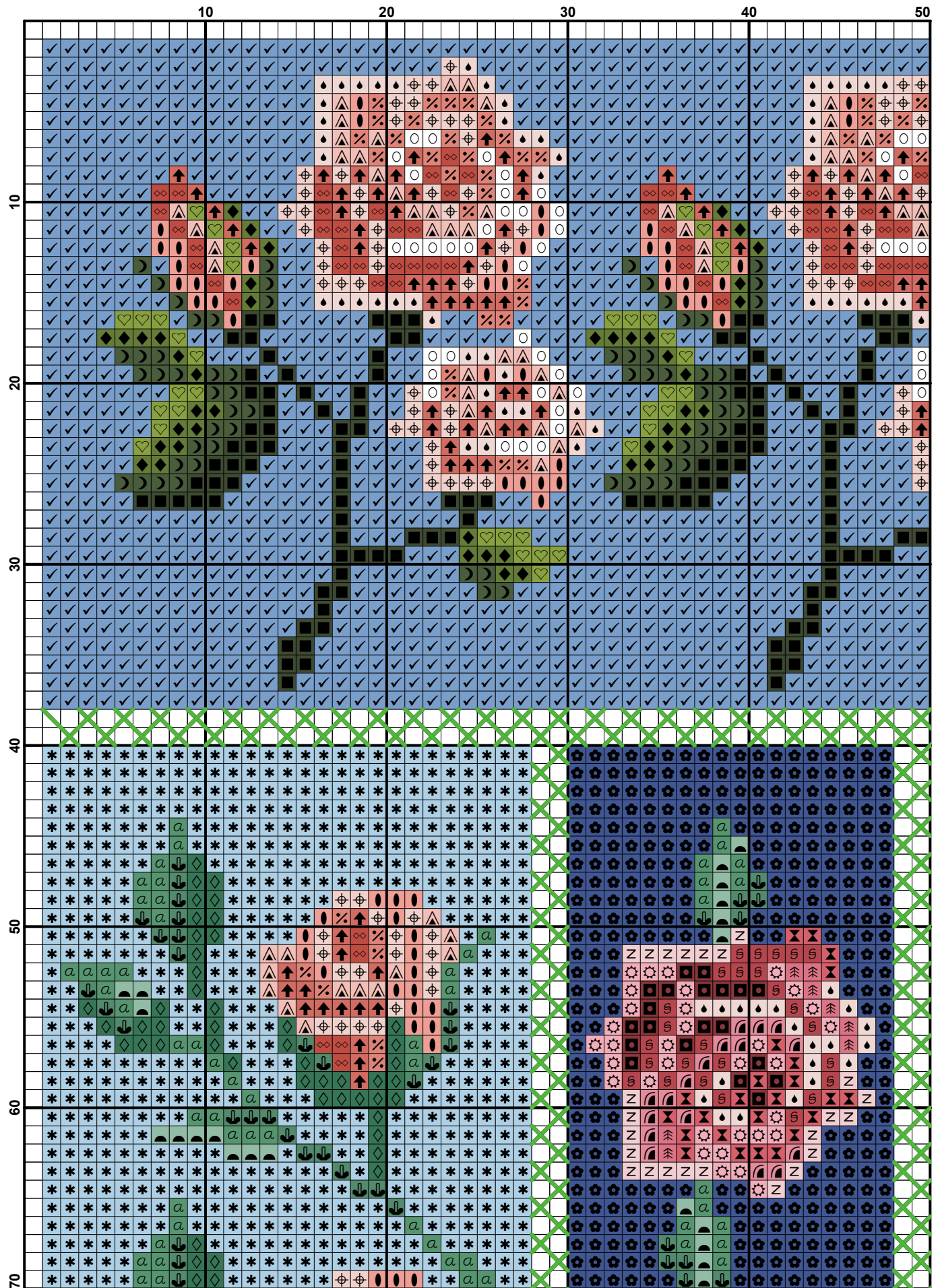


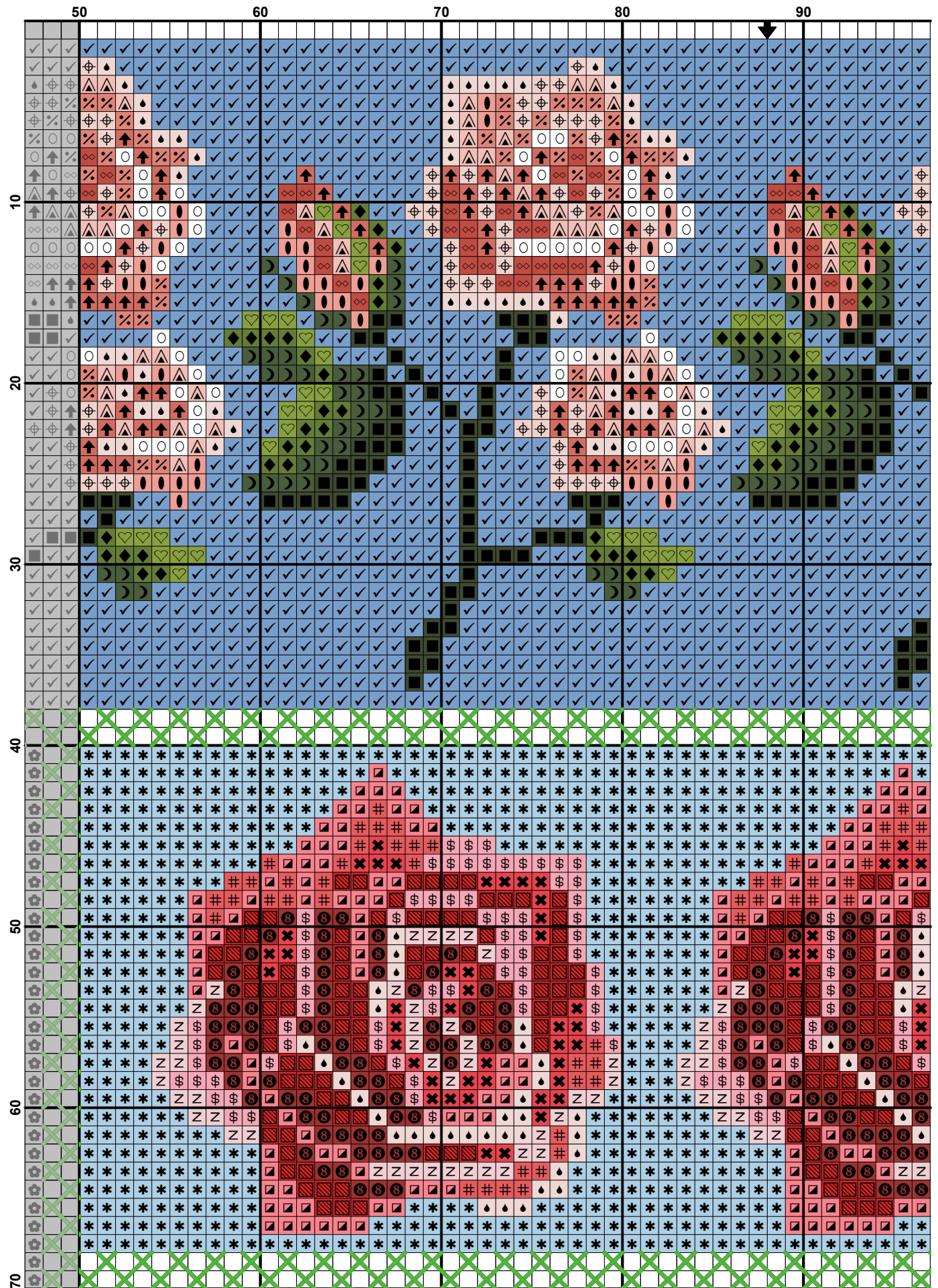
Floss Used for Full Stitches:

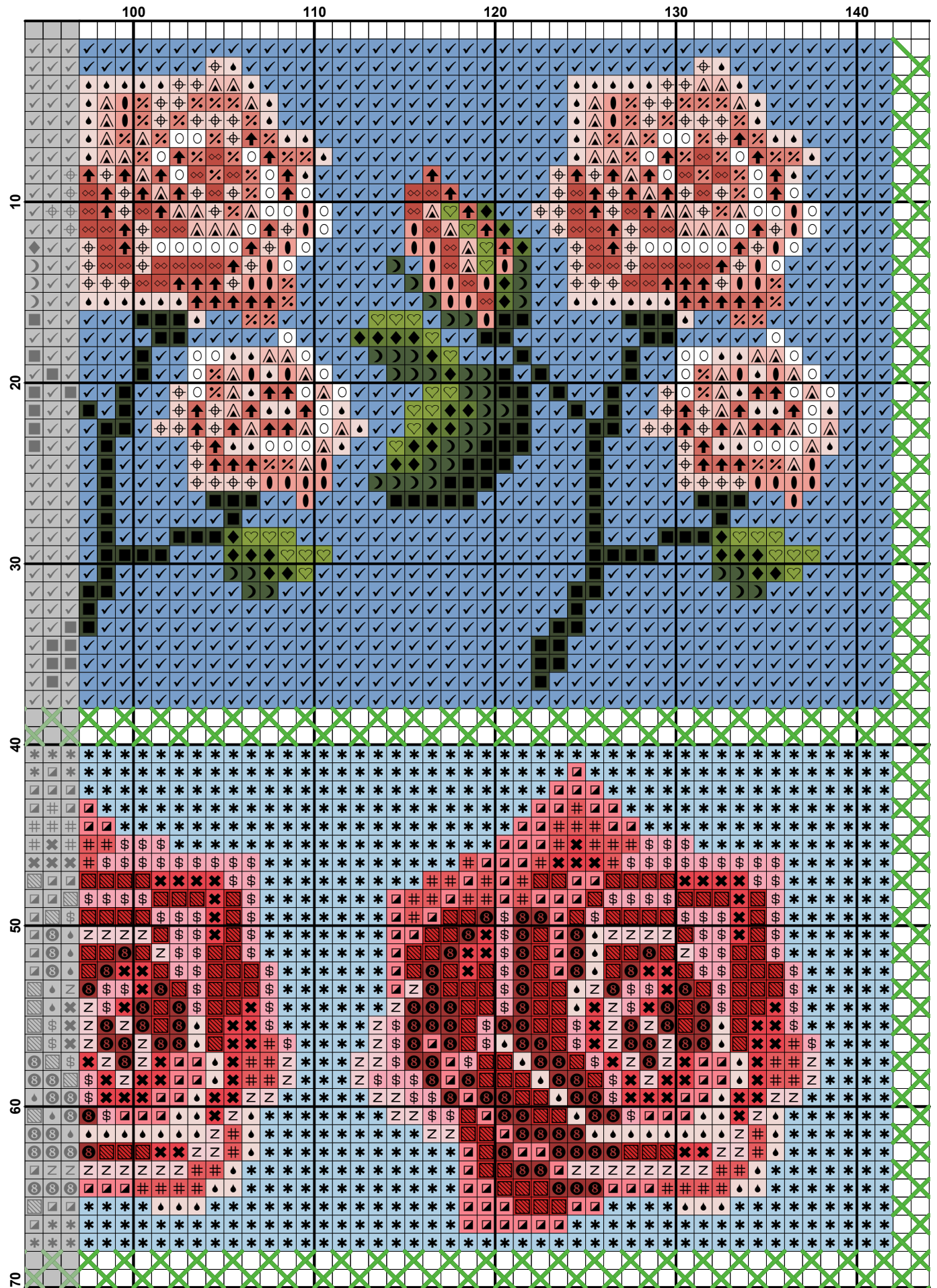
Symbol	Strands	Type	Number	Color
	2	DMC	163	Celadon Green-MD
	2	DMC	304	Christmas Red-MD
	2	DMC	321	Christmas Red
	2	DMC	347	Salmon-VY DK
	2	DMC	469	Avocado Green
	2	DMC	470	Avocado Green-LT
	2	DMC	472	Avocado Green-UL LT
	2	DMC	561	Celadon Greene-VY DK
	2	DMC	666	Christmas Red-BRT
	2	DMC	760	Salmon
	2	DMC	761	Salmon-LT
	2	DMC	777	Raspberry-VY DK
	2	DMC	797	Royal Blue
	2	DMC	799	Delft Blue-MD
	2	DMC	800	Delft Blue-Pale
	2	DMC	818	Geranium-Pale VY LT
	2	DMC	934	Avocado Green-VY DK
	2	DMC	935	Avocado Green-DK
	2	DMC	961	Dusty Rose-DK
	2	DMC	962	Dusty Rose-MD
	2	DMC	963	Dusty Rose-UL VY LT
	2	DMC	3328	Salmon-DK
	2	DMC	3705	Melon-DK
	2	DMC	3706	Melon-MD
	2	DMC	3708	Melon-LT
	2	DMC	3712	Salmon-MD
	2	DMC	3713	Salmon-VY LT
	2	DMC	3716	Dusty Rose-VY LT
	2	DMC	3801	Christmas Red-LT
	2	DMC	3815	Celadon Green-DK
	2	DMC	3817	Celadon Green-LT
	2	DMC	3831	Raspberry-DK
	2	DMC	3832	Raspberry-MD
	2	DMC	B5200	Snow White

Floss Used for Back Stitches:

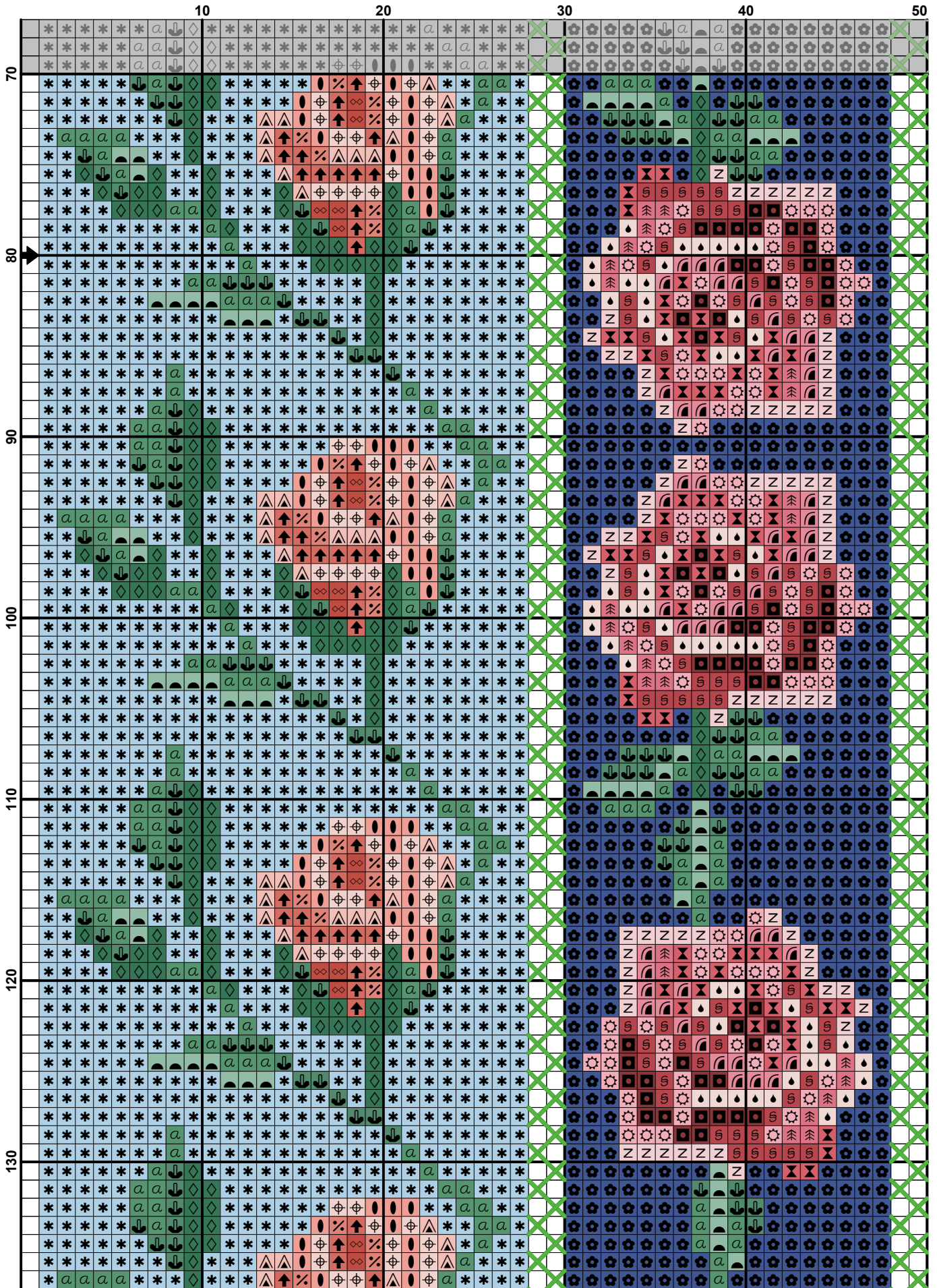
Symbol	Strands	Type	Number	Color
	1	DMC	437	Tan-LT

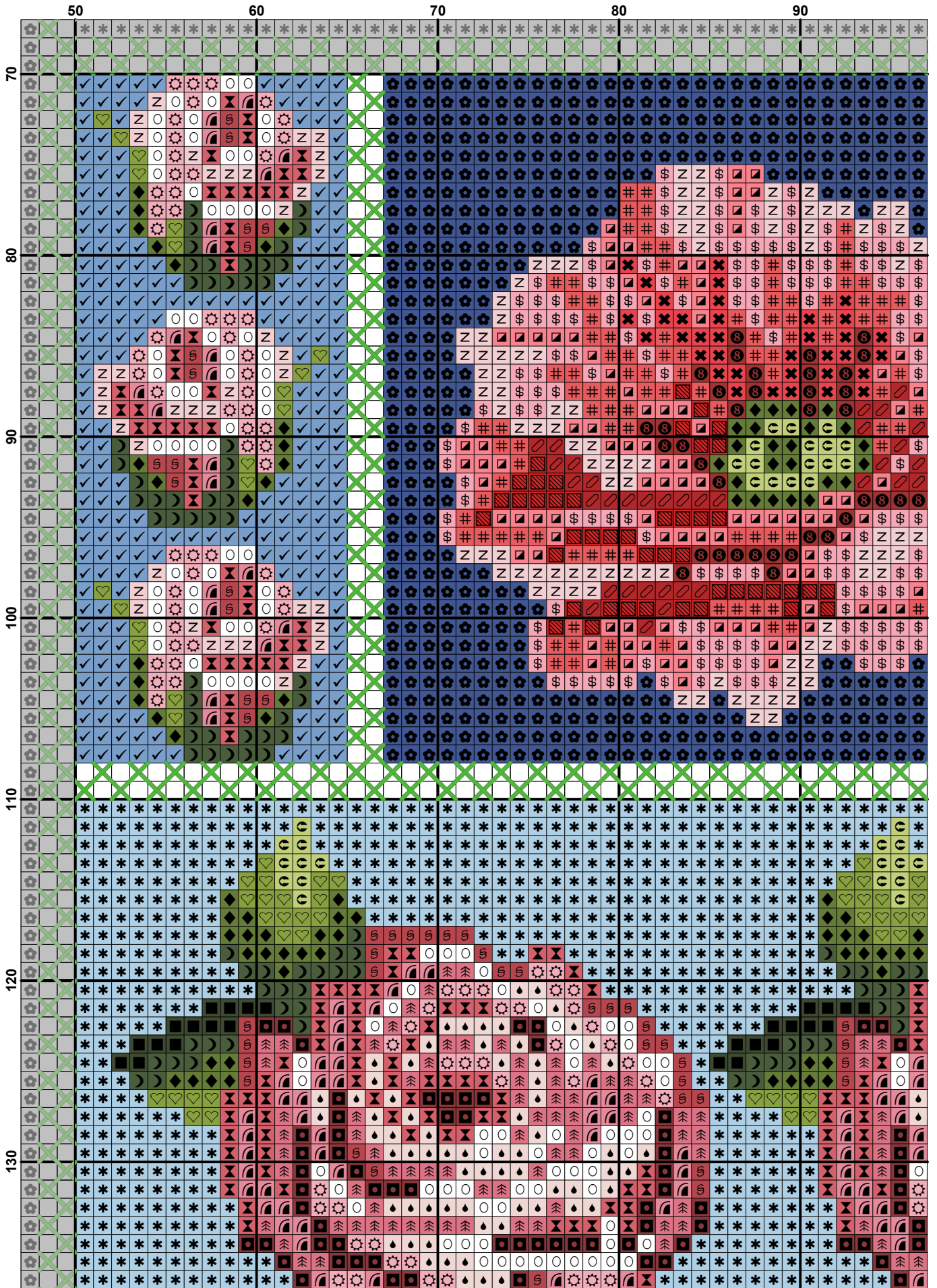


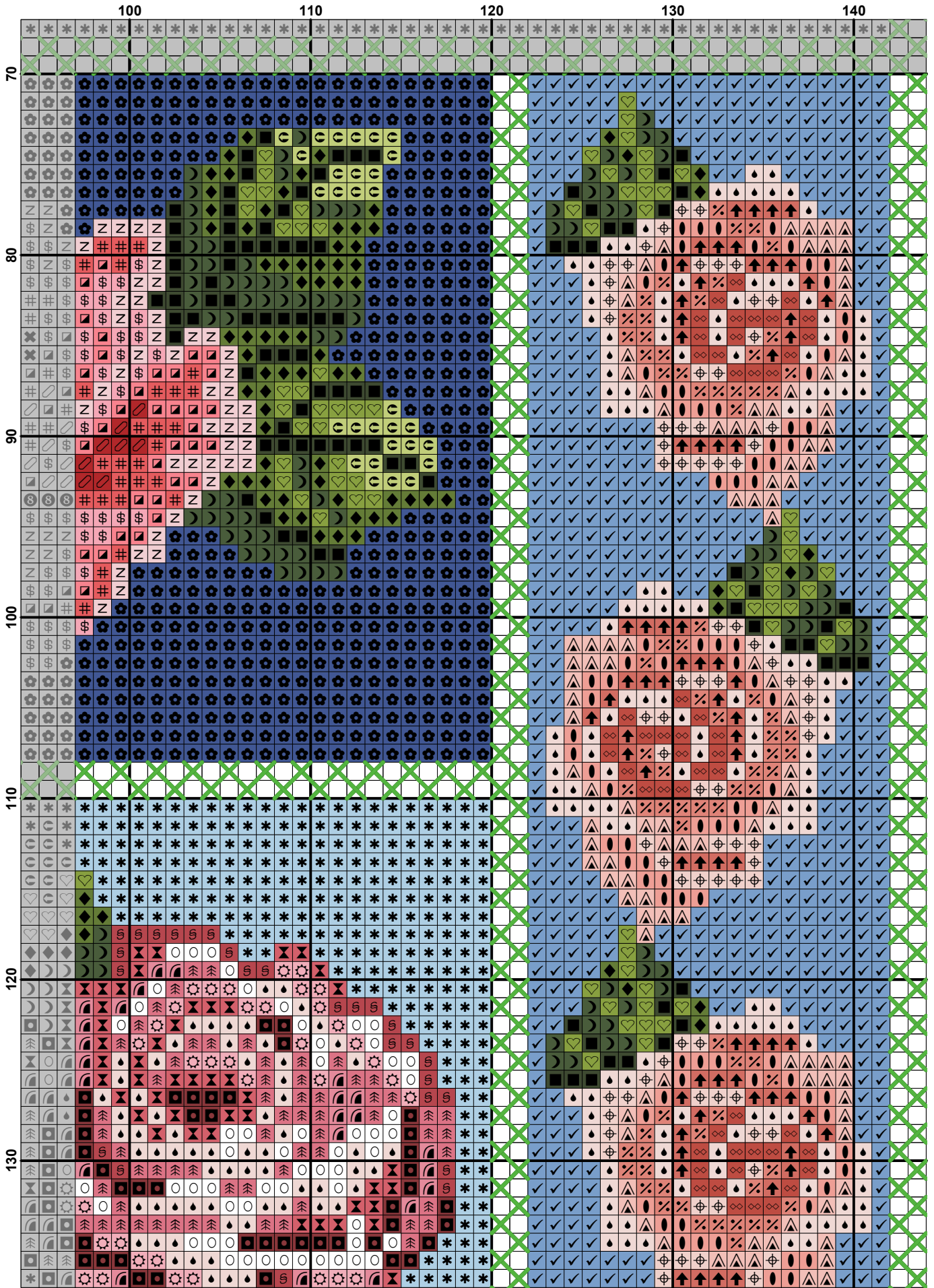




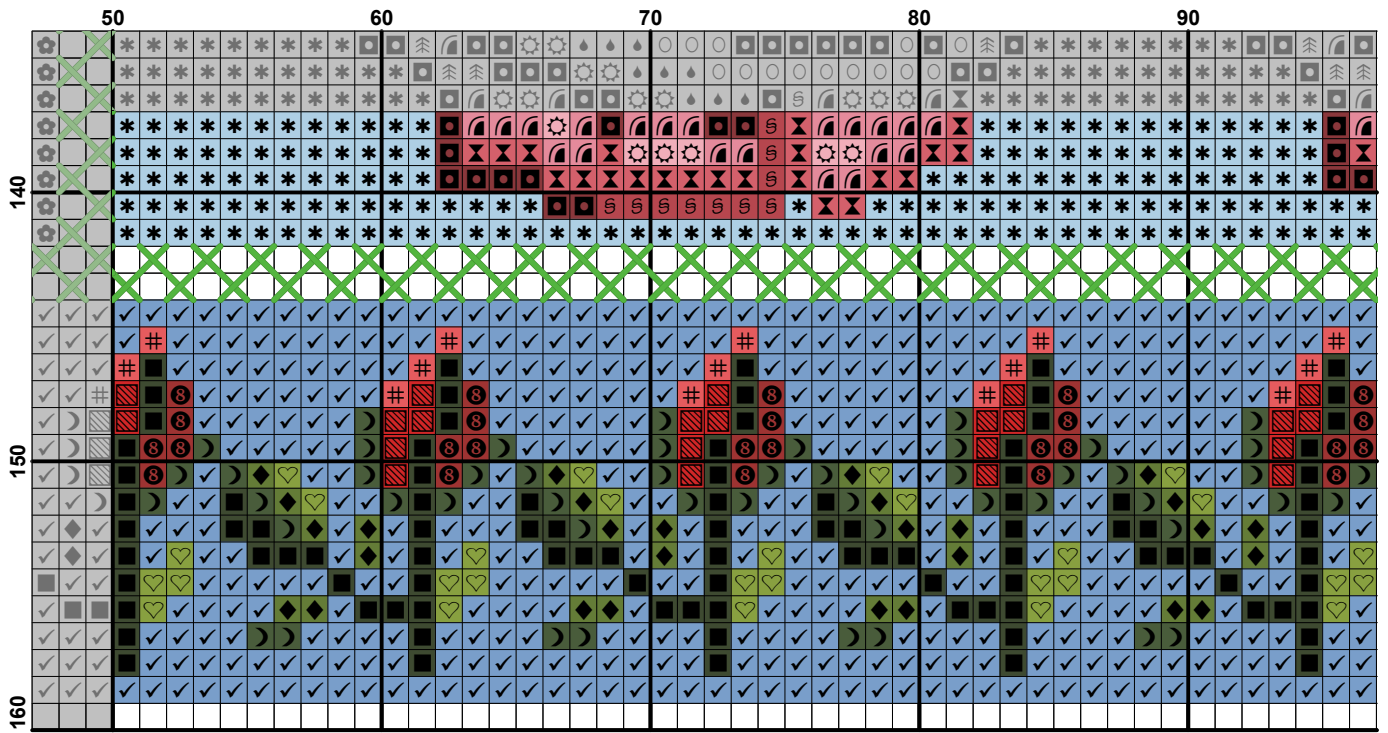
	150	160	170
10	✓	✓	✓
20	✓	✓	✓
30	✓	✓	✓
40	✓	✓	✓
50	✓	✓	✓
60	✓	✓	✓
70	✓	✓	✓

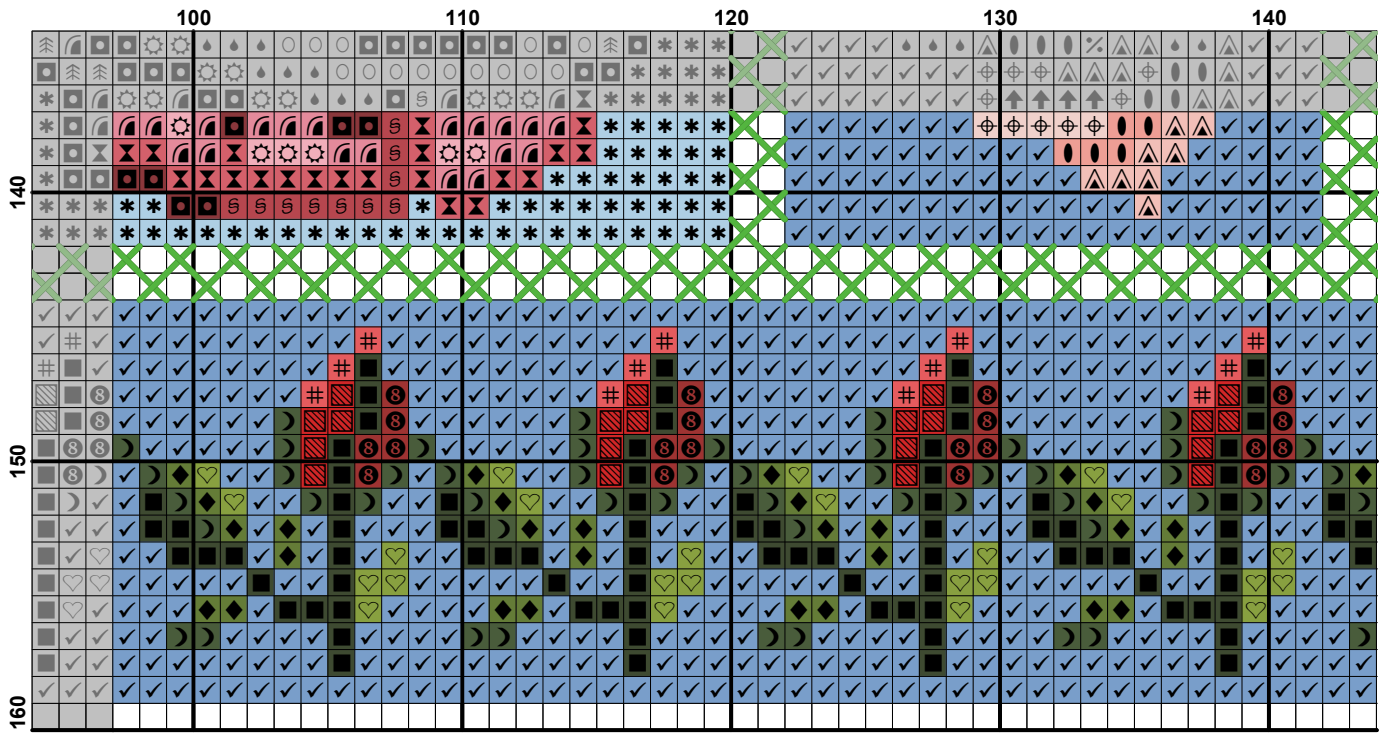


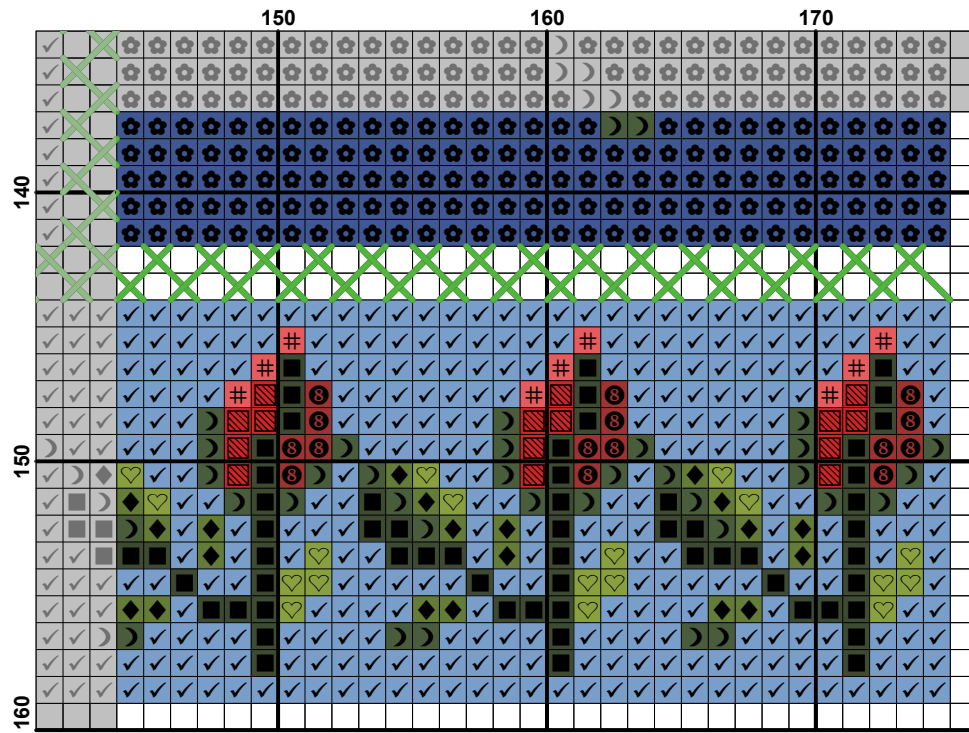




	150	160	170
70	* [Grid]	[Grid]	[Grid]
80	[Grid]	[Grid]	[Grid]
90	[Grid]	[Grid]	[Grid]
100	[Grid]	[Grid]	[Grid]
110	[Grid]	[Grid]	[Grid]
120	[Grid]	[Grid]	[Grid]
130	[Grid]	[Grid]	[Grid]







♥ More Stylish Designs

♥ More FREE Patterns

♥ Much LOWER Prices

on smartercrossstitch.com

Use promocode **FRIEND7** for -7%



Usage Summary

Strands Per Skein: 6

Skein Length: 100.0 cm

Type	Number	Full	Back(cm)	Skein Est.
■ DMC	163	240	0.0	1.057
■ DMC	304	318	0.0	1.400
■ DMC	321	42	0.0	0.185
■ DMC	347	216	0.0	0.951
■ DMC	437	0	186.5	1.026
■ DMC	469	569	0.0	2.505
■ DMC	470	443	0.0	1.951
■ DMC	472	64	0.0	0.282
■ DMC	561	230	0.0	1.013
■ DMC	666	383	0.0	1.686
■ DMC	760	318	0.0	1.400
■ DMC	761	344	0.0	1.515
■ DMC	777	216	0.0	0.951
■ DMC	797	5112	0.0	22.509
■ DMC	799	5437	0.0	23.940
■ DMC	800	4476	0.0	19.708
■ DMC	818	717	0.0	3.157
■ DMC	934	887	0.0	3.906
■ DMC	935	783	0.0	3.448
■ DMC	961	220	0.0	0.969
■ DMC	962	330	0.0	1.453
■ DMC	963	461	0.0	2.030
■ DMC	3328	367	0.0	1.616
■ DMC	3705	275	0.0	1.211
■ DMC	3706	360	0.0	1.585
■ DMC	3708	384	0.0	1.691
■ DMC	3712	250	0.0	1.101
■ DMC	3713	404	0.0	1.779
■ DMC	3716	394	0.0	1.735
■ DMC	3801	162	0.0	0.713
■ DMC	3815	188	0.0	0.828
■ DMC	3817	92	0.0	0.405
■ DMC	3831	284	0.0	1.250
■ DMC	3832	339	0.0	1.493
□ DMC	B5200	347	0.0	1.528



Stitching instructions

	Symbol	How to stitch	Details
Cross Stitch			It is easier and quicker to work rows of full stitches. Work across the fabric from bottom left to upper right corners, and then back to complete the row of full crosses. Always make sure your X's slant in the same direction. For 14-18 count, use 2 strands of thread. For 11 count, use 3-4 strands of thread.
Blend			Blended threads are used to add tonality to the image. Take 1 strand of each thread (check the key). Next, thread your needle with 2 differently colored strands and stitch
Back Stitch			Back Stitch is a row of straight stitches, made with the number of strand (check the key). Select a short, sharp, small-eyed needle for back stitch. Insert the needle at the end of the previous stitch.
Half Stitch			You should always make sure your work slants in the same direction as the lower stitch of the cross stitch. For 14-16 count, use 2 strands of thread. For 18 count, use 1 strand of thread.